

DRAFT

PUBLIC HEARING

PUBLIC UTILITIES COMMISSION

WALLINGFORD TOWN HALL

TOWN COUNCIL CHAMBERS

45 S. MAIN STREET

WALLINGFORD, CT 06492

Thursday, July 16, 2020

6:30 P.M.

**TOWN OF
WALLINGFORD**

JUL 20 2020

**DEPARTMENT OF
PUBLIC UTILITIES**

MINUTES

PRESENT: Chairman Robert Beaumont; Commissioners Patrick Birney and Joel Rinebold; Director Richard Hendershot; Water and Sewer Divisions General Manager Neil Amwake; Water and Sewer Divisions Business Office Manager William Phelan; Recording Secretary Bernadette Sorbo and Mayor William Dickinson, Jr.

Members of the public – None

Mr. Beaumont called the Meeting to order at 6:30 P.M., and the pledge of Allegiance was recited.

1. Pledge of Allegiance

2. Motion to Open the Public Hearing

Chairman Beaumont read the following statement: On behalf of the Board of Public Utilities Commissioners of the Town of Wallingford and the Water Pollution Control Authority of the Town of Wallingford, I hereby convene the public hearing for the adoption of water and sewer charges to be effective for water and sewer invoices rendered on or after October 1, 2020.

The proposed charges that are the subject of this public hearing are available to the public and may be obtained from our General Manager of the Water and Sewer Divisions, Neil Amwake.

Is there a motion and second to read the title and the introductory paragraph of the following proposed charges in their entirety and to waive the reading of the remainder of the proposed charges incorporating its full text into the minutes of this meeting?

Made by: Mr. Birney

Seconded by: Mr. Rinebold

Votes: 3 ayes

Mr. Beaumont read the Notice of Public Hearing on Proposed Revisions to Water and Sewer Charges.

WATER DIVISION CHARGES

TERMS AND CONDITIONS:

This rate is applicable to all water consumers of the Town of Wallingford when the water supply for said service originates from surface water reservoirs, groundwater wells and other facilities owned or used by the Town of Wallingford or its Water Division.

Water service is available by application only and will be on the basis of measurement through one meter. Consumers serviced by more than one service for the same property shall be separately metered for each service and shall be charged the applicable rates for each separate meter. Consumers with one service, though multi-metered, shall be charged the applicable rate for each individual meter.

QUARTERLY CONSUMPTION CHARGES

METERED CHARGE:

The quarterly charge for water service shall consist of the Basic Service Fee (BSF) plus the consumption charge as tabulated herein per meter for all consumers.

BASIC SERVICE FEE

<u>Size of Meter</u>	<u>Basic Service Fee as of 6/1/2007</u>
5/8-inch	\$15.11
3/4-inch	\$17.20
1-inch	\$31.29
1 1/2-inch	\$52.22
2-inch	\$88.31
3-inch	\$103.13
4-inch	\$168.32
10-inch	\$499.11

CONSUMPTION CHARGE

Rate as of
as of 6/1/2015
\$4.09 / 100 cf

NON-METERED CHARGE:

For those services which are not metered, the quarterly charge for such service shall be the Basic Service Fee for a 5/8-inch meter as listed above plus the applicable quarterly consumption charge based on a quarterly consumption of 1,600 cubic feet. This total quarterly charge for non-metered service shall be as follows:

Quarterly Charge
as of 10/1/2020
\$80.55

SERVICE INSTALLATION CHARGES

~~SERVICE INSTALLATION WITH EXCAVATION ONLY, NO PAVEMENT REPAIRS - TOWN
ROADS~~

Deleted

~~SERVICE INSTALLATION WITH EXCAVATION AND PAVEMENT REPAIRS - TOWN
ROADS~~

Deleted

SERVICE INSTALLATION ONLY, NO EXCAVATION OR PAVEMENT REPAIRS - TOWN
ROADS: A water service from the water main to inside the curb line includes the following: Tapping the water main, installing a corporation stop, copper tubing, curb stop, and curb box. This type of service does not include excavation, backfilling, temporary paving, or final pavement restoration, which will be the Owner's responsibility. The water meter charges are not included.

	<u>Size of Service</u>			
	1-inch	1 1/4-inch	1 1/2-inch	2-inch
Short Service	\$660.00	\$780.00	\$980.00	\$1,170.00
Long Service	\$970.00	\$1,110.00	\$1,310.00	\$1,560.00
Per Additional Foot	\$65.00	\$65.00	\$65.00	\$70.00

A Short Service installation is a water service less than sixteen linear feet (16'-0") as measured from the centerline of the water main to the customer's side of the curb box assembly. A Long Service is a water service greater than sixteen linear feet (16'-0") and less than thirty linear feet (30'-0") as measured from the centerline of the water main to the customer's side of the curb box assembly.

Any water service installation greater than thirty linear feet (30'-0") will be charged per additional linear foot or portion thereof as measured from the centerline of the water main to the customer's side of the curb box assembly.

In the event that the Water Division installs a service in a state road, the cost will be determined on the basis of the actual cost for labor, tools, materials and equipment. A surcharge of an additional 45.10% on the cost of labor will be applied to reflect overhead.

WATER METER INSTALLATION FEE:

<u>Size of Meter</u>				
5/8-inch	3/4-inch	1-inch	1 1/2-inch	2-inch
\$345.00	\$350.00	\$410.00	\$1,310.00	\$1,535.00
3-inch	4-inch	6-inch	8-inch	10-inch
\$1,565.00	\$2,610.00	\$5,620.00	\$9,020.00	\$24,550.00

Notes:

- For temporary meter installations, when allowed by the Division for periods not to exceed one year, the cost of the meter only will be refundable provided that the meter is returned to the Water Division in acceptable operating condition.
- Existing services and/or meters shall be renewed at no charge with the provision that they be the same size at the same location and be in need of renewal in the opinion of the Water Division.

MISCELLANEOUS CHARGES

- Damaged Water Infrastructure and Miscellaneous Work
 - Replacement or repair of damaged, missing, or frozen meter, radio read unit, outside reader unit, fire hydrants and other miscellaneous work as a result of customer action or negligence will be charged based upon the actual costs of labor, tools, materials and equipment. A surcharge of an additional 45.10% on the cost of labor will be applied to reflect overhead.
 - Tampering with a water meter will be invoiced at \$250.00 for the first occurrence, \$500.00 for the second occurrence and \$1,000 for each occurrence thereafter.
- Service Turn Off and Turn On
 - The Water Division will remove and reset a water meter, or turn off and turn on the water at the curb box one (1) cycle per calendar year [one on/off per calendar year] during normal business hours for the customer's convenience such as interior plumbing work that requires the water to the structure to be turned off, spending winters in a warmer climate, or shut-off and resumption of service due to account nonpayment.
 - Should the customer require more than 1 on/off per calendar year, the charge will be \$80.00 per visit to remove a meter, reset a meter, turn the water off at the curb box or turn the water on at the curb box. There is no charge to remove a meter for a building demolition.
- Construction Permit Fees:
 - Installation or repair of water services, repairs of water mains: \$75.00

- Installation of mainline water mains or fire service lines: \$300.00

A separate permit is required for each independent main line or service installation and/or repair.

- Bulk Water (Tank Truck Fill):
- \$20.00 plus the water consumption rate in effect at the time per 100 cubic feet for all water purchased.

After Hours Charge

- For call-out work performed outside regular Division working hours if such call-out is for customer's convenience: \$260.00

SEWER DIVISION CHARGES

SERVICE POLICY:

The Town of Wallingford, through its Water Pollution Control Authority (WPCA) and Sewer Division, reserves the right to furnish sanitary sewer service in accordance with policies presently established by the Water Pollution Control Authority of the Town of Wallingford and the Sewer Authority which adopted Rules and Regulations of the Sewer Division on September 17, 1996, as amended, and also in accordance with Connecticut General Statutes Chapter 103, as amended.

All sewer service of the Sewer Division is rendered under and subject to the rules and regulations of the Sewer Division as presently established and amended from time to time and the technical standards adopted by the staff of the Sewer Division as revised from time to time.

QUARTERLY USAGE CHARGES

METERED CHARGE:

The quarterly usage charge for sewer service shall consist of a Basic Service Fee (BSF) plus a Usage Charge based on seventy-five percent (75%) of metered water consumption for customers having metered water service, except for those customers listed as exceptions.

BASIC SERVICE FEE

Size of Meter	Quarterly BSF as of 10/1/2020	Quarterly BSF as of 7/1/2021	Quarterly BSF as of 7/1/2022	Quarterly BSF as of 7/1/2023
5/8-inch	\$23.34	\$24.38	\$25.34	\$27.09
3/4-inch	\$35.01	\$36.57	\$38.01	\$40.64
1-inch	\$58.35	\$60.95	\$63.35	\$67.73
1 1/2-inch	\$116.70	\$121.90	\$126.70	\$135.45
2-inch	\$186.72	\$195.04	\$202.72	\$216.72
3-inch	\$373.44	\$390.00	\$405.44	\$433.44

4-inch	\$583.50	\$609.50	\$633.50	\$677.26
--------	----------	----------	----------	----------

USAGE CHARGE

Rate as of <u>10/1/2020</u> \$5.72 / 100 cf	Rate as of <u>7/1/2021</u> \$6.24 / 100 cf	Rate as of <u>7/1/2022</u> \$7.02 / 100 cf	Rate as of <u>7/1/2023</u> \$8.07 / 100 cf
---	--	--	--

EXCEPTIONS:

1. Quarterly Sewer Flat Charge: For those services which do not use Wallingford water but do utilize the Wallingford sanitary sewer facilities and are not metered, or those customers of the Wallingford Water Division having non-metered water service. The quarterly charge for such service shall be the Basic Service Fee for a 5/8-inch meter as listed above plus the applicable quarterly usage charge based on 75% of a quarterly usage of 1,600 cubic feet of water equal to 1,200 cubic feet of water. This total quarterly charge for flat rate service shall be as follows:

Quarterly Sewer Flat Charge as of <u>10/1/2020</u> \$91.98	Quarterly Sewer Flat Charge as of <u>7/1/2021</u> \$99.26	Quarterly Sewer Flat Charge as of <u>7/1/2022</u> \$109.58	Quarterly Sewer Flat Charge as of <u>7/1/2023</u> \$123.93
---	--	---	---

2. Residential accounts that do not use Wallingford water but do utilize Wallingford sanitary sewer facilities may, at their own expense, modify their private water service to permit the installation of a water meter. The quarterly charge for such sewer service shall be the current Quarterly Usage Charge consisting of a Basic Service Fee plus a Usage Charge based on seventy-five percent (75%) of the metered water consumption.

3. Industrial or commercial accounts utilizing Wallingford water in conjunction with their own supply and using Wallingford sewer facilities shall determine the total flow discharged to the Wallingford sanitary sewer facilities to the satisfaction of the Sewer Division through the installation of an approved sewer meter. All costs of such installations including required calibration and maintenance shall be borne by the Owner. Such customers shall be billed based on that flow actually discharged to the sanitary sewer.

4. Industrial or commercial accounts that obtain all their water from Wallingford, but do not discharge all to the Wallingford sanitary sewer, may request that their sewer charge be adjusted, provided the user determines the sewer flow to the satisfaction and acceptance of the Sewer Division.

PARTIAL BILLING PERIOD

Service rendered for less than a billing cycle shall be billed on a pro rata charge of the quarterly Basic Service Fee plus water consumption or sanitary sewer usage.

MISCELLANEOUS CHARGES

- Septage receiving fee (In-Town Septage Only): \$100 / 1,000 gallons

This charge shall supersede all septage receiving fees previously established by the Water Pollution Control Authority of the Town of Wallingford.

- Construction Permit Fees:
 - Installation or repair of sewer laterals, repairs of mainline sanitary sewers: \$75.00
 - Installation of mainline sanitary sewers: \$300.00

WATER AND SEWER PAYMENT TERMS AND CONDITIONS

WATER AND SEWER DIVISIONS PAYMENT POLICIES:

1. All charges of the Water and Sewer Divisions are due by the date indicated on the bill. Interest shall be charged on the first day following the due date on any unpaid water and/or sewer charge balance on that date. Interest shall be charged in accordance with the General Statutes of the State of Connecticut.
2. A property lien may be filed by means of a continuation certificate upon the benefited property, after thirty days from the due date of the bill, for all unpaid balances of \$10.00 or more. Lien certificates shall be filed and lien fees charged in accordance with the General Statutes of the State of Connecticut.
3. Partial payment shall be applied first to interest charges, then to water and/or sewer charges and lastly to lien charges.
4. (New) A \$35.00 fee per transaction will be charged to a customer's account for checks returned due to insufficient funds.
5. (New) A charge of \$80.00 will be rendered for conducting a final meter read and/or inspection, and the issuance of a final water and/or sewer bill.

Unless revised as set forth herein and/or at the Public Hearing of July 16, 2020, all other terms and conditions, water consumption and sewer usage, service charges, and payment terms and conditions will remain as in effect prior to the adoption of said revisions.

Dated at Wallingford, Connecticut, this 2nd day of July, 2020.

Robert N. Beaumont, Chairman
Board of Public Utilities Commissioners
Water Pollution Control Authority

Mr. Amwake presented a PowerPoint for the proposed Water and Sewer User Charges. See attached for a copy of the presentation.

Public Question and Answer Period

Mayor Dickinson stated that the presentation given was well presented and saluted everyone involved for dealing with the complicated project as well as the costs associated with the project. Mayor Dickinson stated that he felt compelled to speak on behalf of the public as to the basics. Mayor Dickinson noted the residential rates will increase 20% if not slightly more and the commercial/industrial rates will increase 30% over the next four years. In the business climate that is happening, this is extremely troublesome. He stated that if we are not in a depression right now, we are as close as we are going to get to it. Six hundred thousand people are unemployed in the State of Connecticut with no prospect of a quick recovery. We face a mandate of a phosphorus project which lacks funding available from State and Federal sources. In the 1990's, 80 – 90% of sewer improvements were handled by State and Federal monies. We are basically being asked to fund most of the project. The project grew from twenty million dollars to fifty-eight million dollars over the past five to six years. It is no one's fault, it is just fact. We were promised 50% funding and now funding is not even that. Then we must ask what the purpose is for this project. Is there a serious public safety or public health issue? Mayor Dickinson advised that this is where he finds the failure. This project is not for public safety or public health issues. This is for a very good environmental cause. That is not wrong but in this time period and business climate where fewer people are using the service, their costs are steadily increasing which has nothing to do with the public's health and safety. It is a failure of government to be responsive to the citizens who depend upon the government for good decision making. At the very least, this should have been suspended until such time that there was more money to support the project. People should be aware of the impact of this. It is very destructive given the financials in the economy.

The Public Question and Answer Period Closed.

ADJOURNMENT

Motion to adjourn at 7:43 p.m.

Made by Mr. Birney

Seconded by Mr. Rinebold

Votes: 3 ayes

The Public Hearing was adjourned at 7:43 p.m.

Respectfully submitted,

Bernadette Sorbo
Recording Secretary

Respectfully submitted,

Joel M. Rinebold
Secretary



Public Hearing for Proposed Water and Sewer User Charges

Wallingford Department of Public Utilities
July 16, 2020 at 6:30 p.m. - Thursday

Public Hearing Agenda

- ❑ Introductions
- ❑ WPCF Upgrades Project Objectives
- ❑ WPCF Influent Flow and Loading Statistics
- ❑ WPCF Phosphorus Effluent Quantity
- ❑ WPCF Current Treatment Processes and Flow Schematic



Public Hearing Agenda (continued)

- ❑ WPCF Upgrades Project – Phase 1
 - ❑ Anaerobic Basin and Intermediate Pump Station
 - ❑ Secondary Settling Tanks
 - ❑ Secondary Pump Station
 - ❑ Tertiary Phosphorus Treatment
 - ❑ UV Disinfection and Post Aeration
 - ❑ SCADA Instrumentation
 - ❑ Emergency Generator and Electrical Upgrades

- ❑ WPCF Upgrades Project – Phase 2 (Next 5 Years)
 - ❑ Fine Screens
 - ❑ Solids Handling
 - ❑ Electrical Upgrades



Public Hearing Agenda (continued)

- ❑ WPCF Upgrades Clean Water Fund Budget
- ❑ Cost of Service Study Approach
- ❑ Historical Water Division Billable Consumption and Sewer Division Billable Usage
- ❑ Historical Sewer Division Rates
- ❑ Number of Sewer Customers by Meter Size and Class



Public Hearing Agenda (continued)

- ❑ Sewer Division Current Commitments

- ❑ Recommended Sewer Division Rate Model
 - ❑ FY20-21 to FY23-24

- ❑ Proposed Sewer Division Basic Service Fee (BSF)
 - ❑ FY20-21 to FY23-24

- ❑ Proposed Sewer Division Usage Rate (ccf)
 - ❑ FY20-21 to FY23-24



Public Hearing Agenda (continued)

- ❑ Projected Quarterly Increase by Meter Size and Class
 - ❑ FY20-21
- ❑ Recommended Changes to Water Division Miscellaneous Charges
- ❑ Recommended Changes to Sewer Division Miscellaneous Charges
- ❑ Next Steps
- ❑ Discussion and Questions



Introductions

- ❑ Public Utilities Commission

- ❑ Robert Beaumont, Chairman
- ❑ Patrick Birney, Vice Chair
- ❑ Joel Reinbold, Secretary

- ❑ Town of Wallingford Staff

- ❑ Neil H. Amwake, P.E., Sewer Division General Manager
- ❑ William Phelan, Business Manager
- ❑ Richard A. Hendershot, Director of Public Utilities



WPCF Upgrades Project Objectives

- ❑ Ensure the sewage disposal and growth needs of the Town are met for present and future flows and pollutant loadings
 - ❑ 20-year planning period (2021 – 2041)
- ❑ Meet the tertiary phosphorus effluent limit effective April 1, 2022
 - ❑ 8.95 lbs./day average seasonal load cap (flow based)
 - ❑ Phosphorus removal mandated by the NPDES discharge permit



WPCF Upgrades Project Objectives

- ❑ WPCF has not had any major upgrades or improvements since substantial completion was achieved on July 1, 1989
 - ❑ 31+ years of operation (and counting)
- ❑ Most existing systems and equipment are **near the end of their useful life**
- ❑ Work includes **correction of flooding of existing equipment and structures**
- ❑ Incorporates controls that will improve operations and energy efficiency



WPCF Influent Flow Statistics

❑ Current

- ❑ Average Annual Flow = 5.1 mgd
- ❑ Permitted Design Flow = 8.0 mgd
- ❑ Maximum Month Flow = 9.0 mgd
- ❑ Maximum Day Flow = 19.1 mgd

❑ Future (2041)

- ❑ Average Annual Flow = 5.5 mgd
- ❑ Permitted Design Flow = 8.0 mgd
- ❑ Maximum Month Flow = 9.5 mgd
- ❑ Maximum Day Flow = 19.56 mgd



WPCF Influent Loading Statistics

❑ Current

❑ Biological Oxygen Demand (BOD)	9,968 lbs./day
❑ Total Suspended Solids (TSS)	13,033 lbs./day
❑ Total Nitrogen	1,539 lbs./day
❑ Total Phosphorus	206 lbs./day

❑ Future (2041)

❑ Biological Oxygen Demand (BOD)	11,603 lbs./day
❑ Total Suspended Solids (TSS)	14,891 lbs./day
❑ Total Nitrogen	1,836 lbs./day
❑ Total Phosphorus	251 lbs./day



NPDES Phosphorus Effluent Limits

❑ Current

- ❑ Not to exceed 0.70 mg/L
 - ❑ For any two consecutive months
 - ❑ Neutral of flow (mgd)

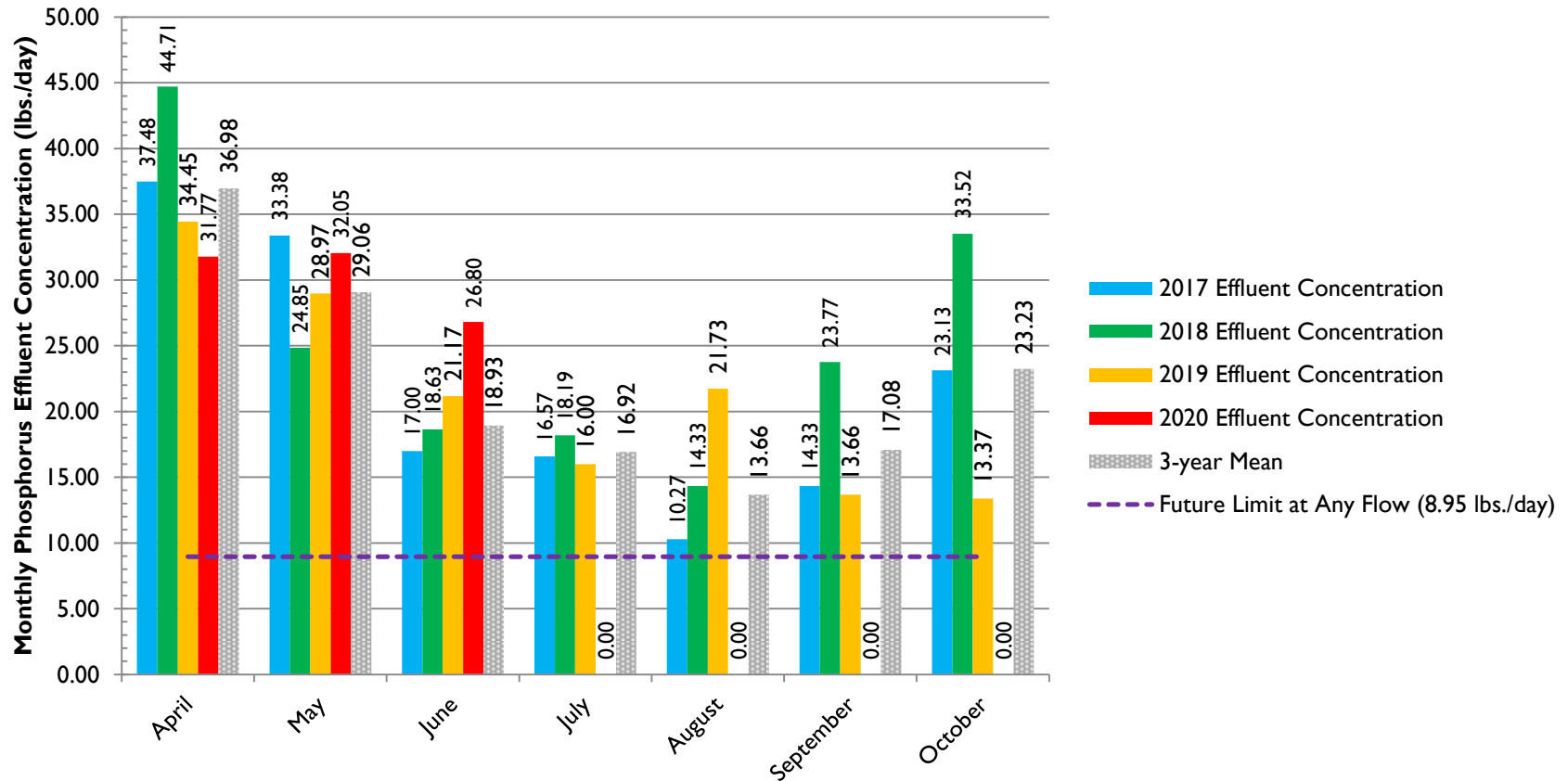
❑ Future (April 1, 2022)

- ❑ 8.95 lbs./day average seasonal load cap (flow based)
 - ❑ At 5.5 mgd the required effluent phosphorus limit = 0.19 mg/L
 - ❑ At 8.0 mgd the required effluent phosphorus limit = 0.13 mg/L
- ❑ 0.31 mg/L average monthly limit
- ❑ 0.62 mg/L maximum daily limit

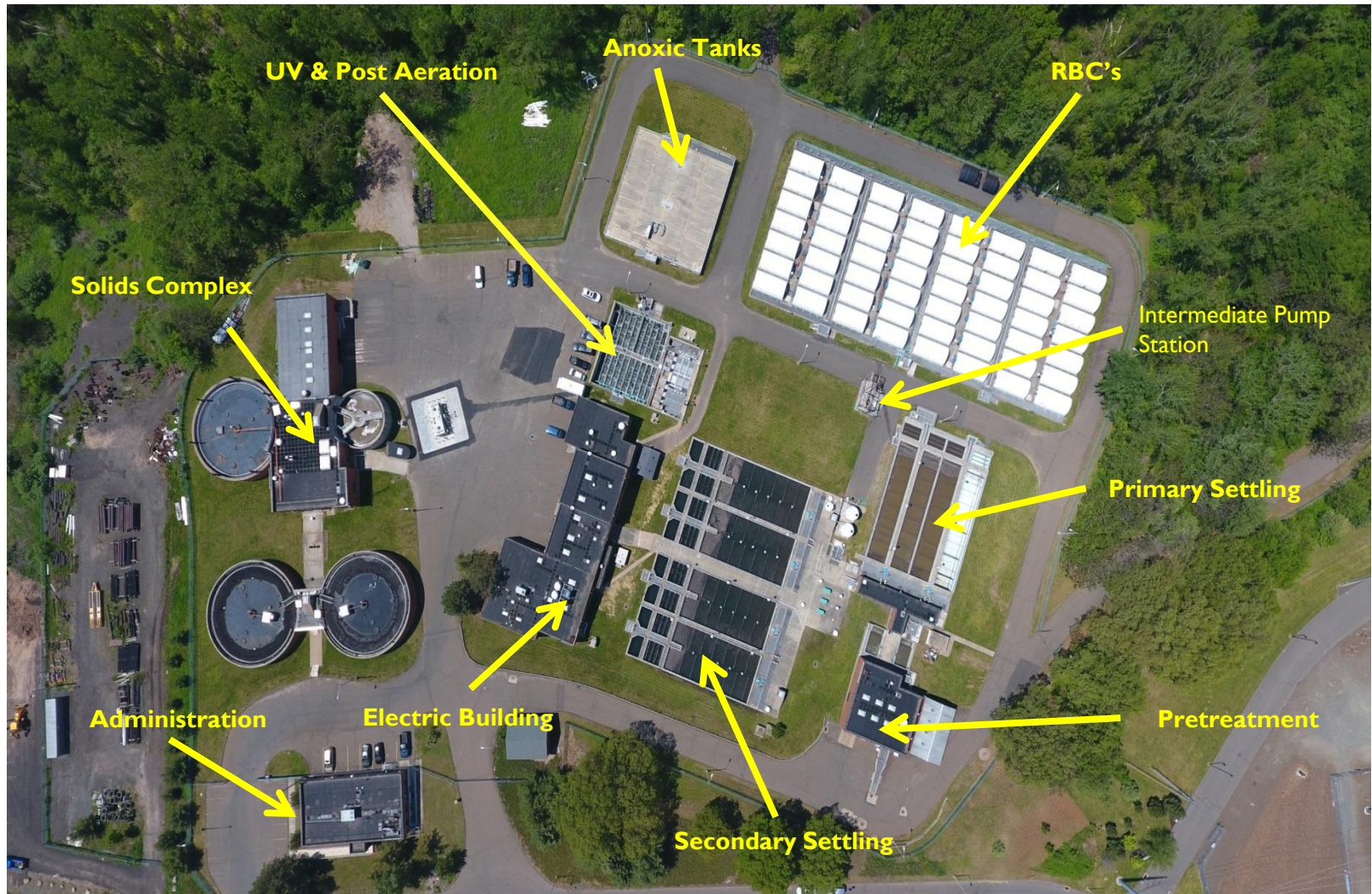


Current Phosphorus Effluent Quantity

Monthly Seasonal Phosphorus Effluent Concentration
2017 - 2020
Sewer Division
Department of Public Utilities



Current WPCF Treatment Processes

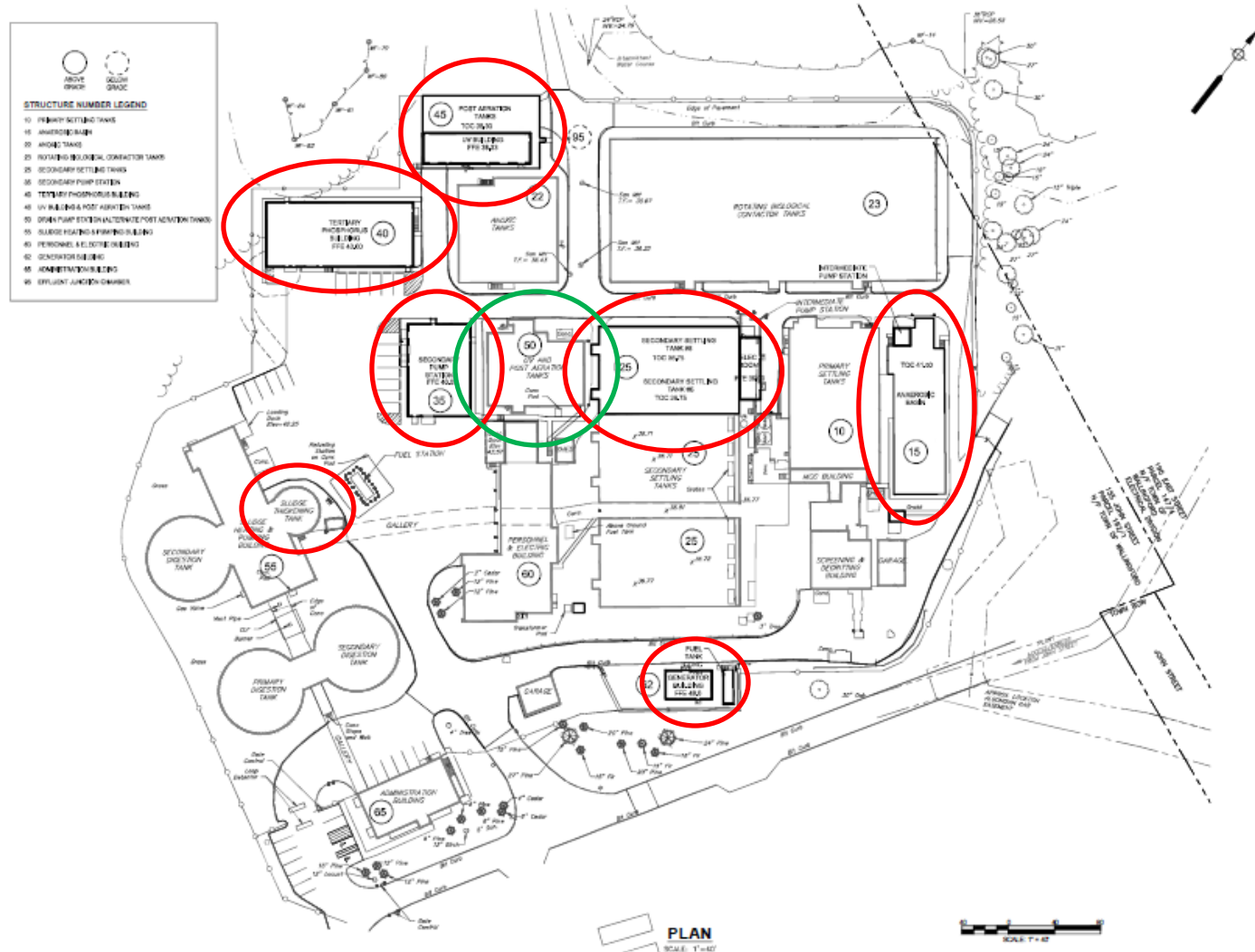


PATH/FILENAME: P:\60580015-WALLINGFORD WPCF\FIGURES\ATTACHMENT A-2 PROPOSED PLANT SCHEMATIC.DWG

ANSI B - 5-11-06



WPCF Upgrades Project – Phase 1



WPCF Upgrades Project – Phase 1

❑ Anaerobic Basin (AB)

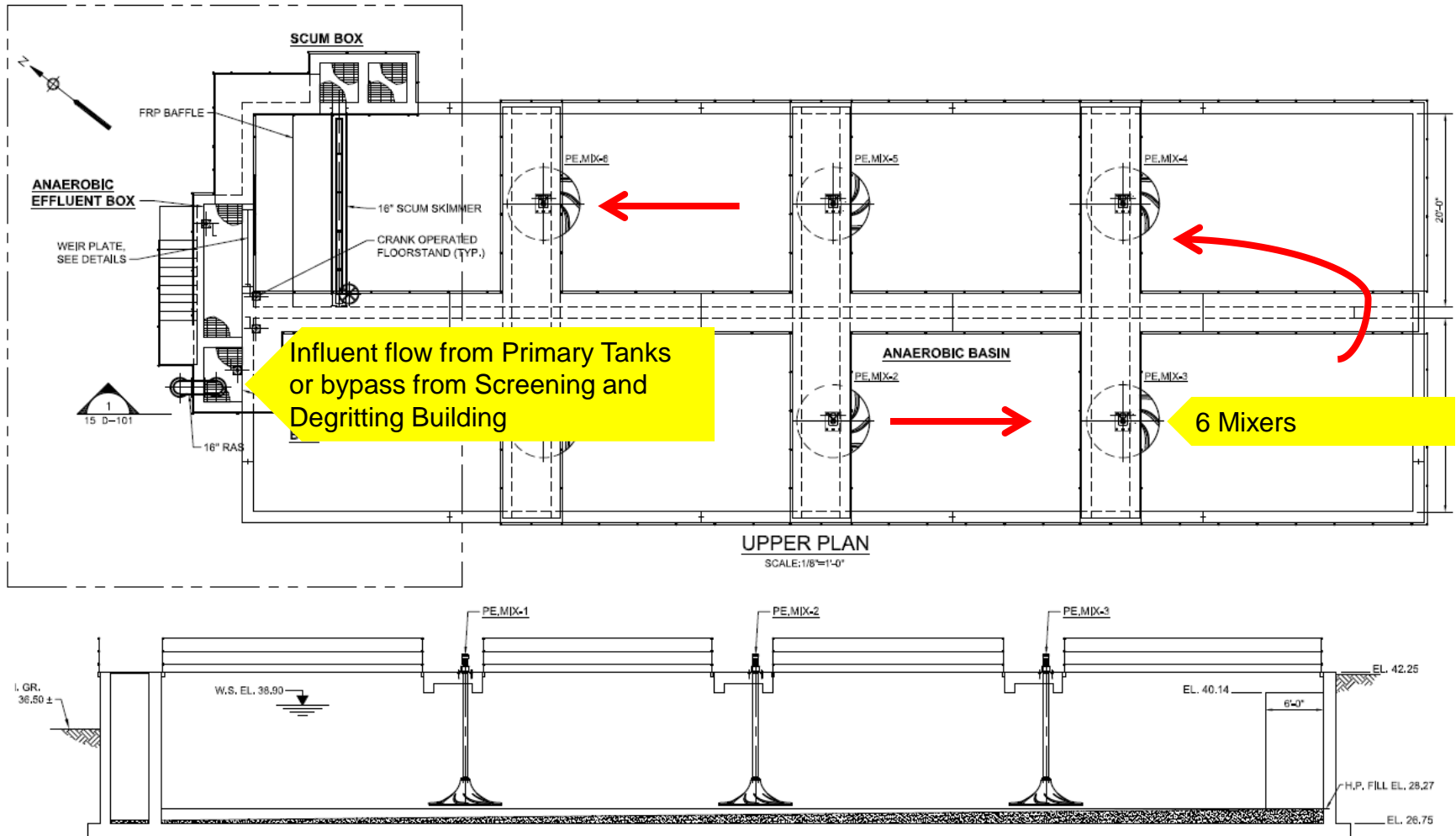
- ❑ To improve on existing efforts to cultivate a consistent biological Phosphorus (Bio-P) process
 - ❑ Coarse uptake of phosphorus
 - ❑ Modeling shows additional total Nitrogen and additional Bio-P removal occurs when Primary Settling Tanks are offline
 - ❑ Removes current carbon limiting situation
- ❑ Goal is to reduce dependence on chemical phosphorus removal, thereby reducing operational expenses
- ❑ Provides operational flexibility

❑ Relocated Intermediate Pump Station (IPS)

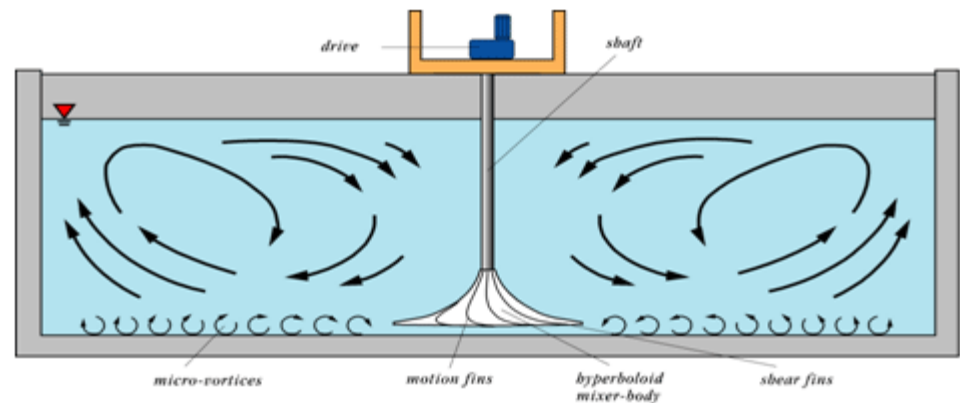
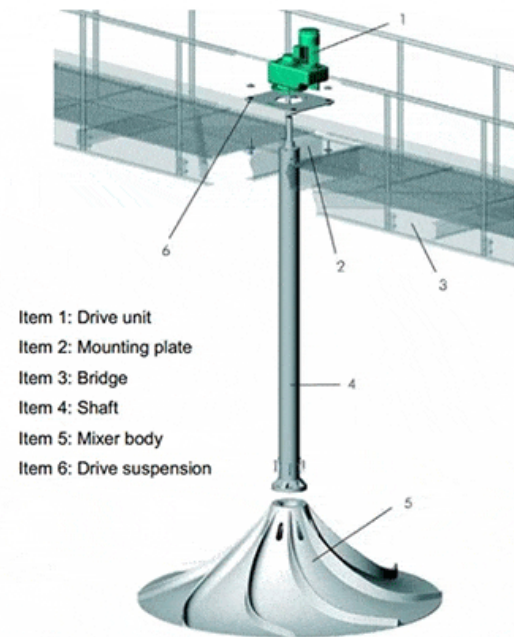
- ❑ Need to relocate the IPS to accommodate the two new Secondary Settling Tanks



Anaerobic Basin Design



Anaerobic Basin Design



Anaerobic Basin Construction Progress



AB and Intermediate PS Construction



Intermediate PS Construction Progress



Intermediate PS Construction Progress



WPCF Upgrades Project – Phase 1 (cont.)

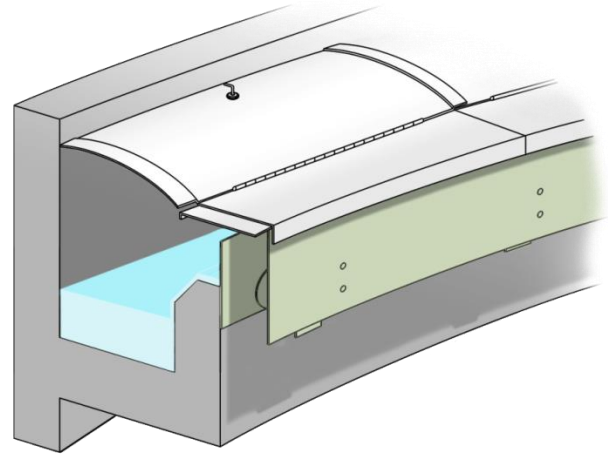
- ❑ Additional Secondary Settling Tanks
 - ❑ Do not currently meet operational standards
 - ❑ 2 new tanks, identical to the existing tanks
 - ❑ Additional settling tank surface area is required to reduce suspended solids loading to the tertiary phosphorus treatment process
 - ❑ Goal is suspended solids loading < 5,000 mg/L at the tank outlet
 - ❑ Effluent launders of all 6 tanks will be covered to reduce algae



Secondary Settling Tanks Site Plan



Secondary Settling Tanks Design



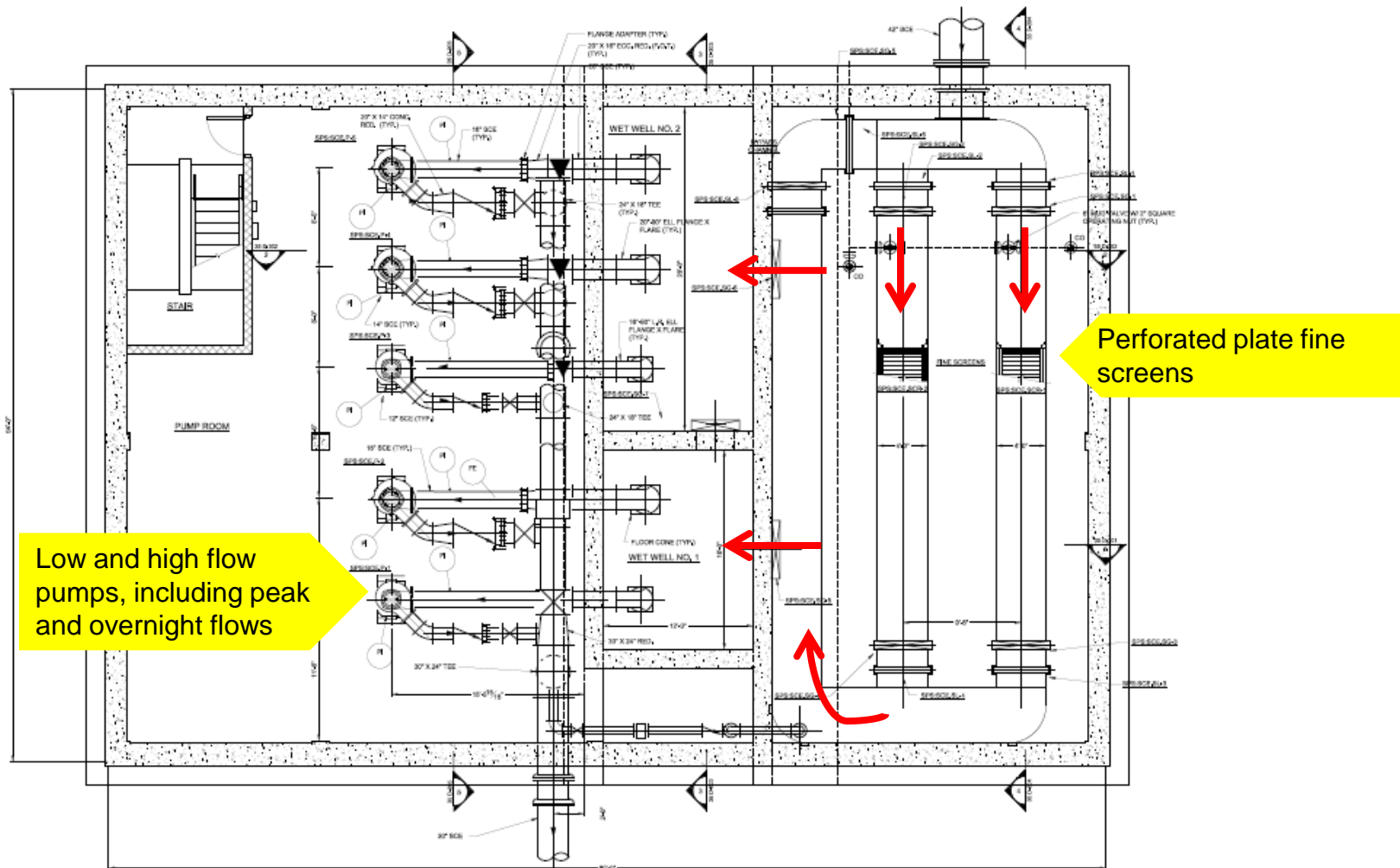
WPCF Upgrades Project – Phase 1 (cont.)

❑ Secondary Pump Station

- ❑ Necessary to raise the hydraulic grade line (HGL) to the tertiary phosphorus treatment process
- ❑ Includes screening to prevent algae from entering the tertiary phosphorus treatment process and to protect downstream equipment
- ❑ Can be bypassed November 1 – March 31 during the phosphorus and UV disinfection offseason



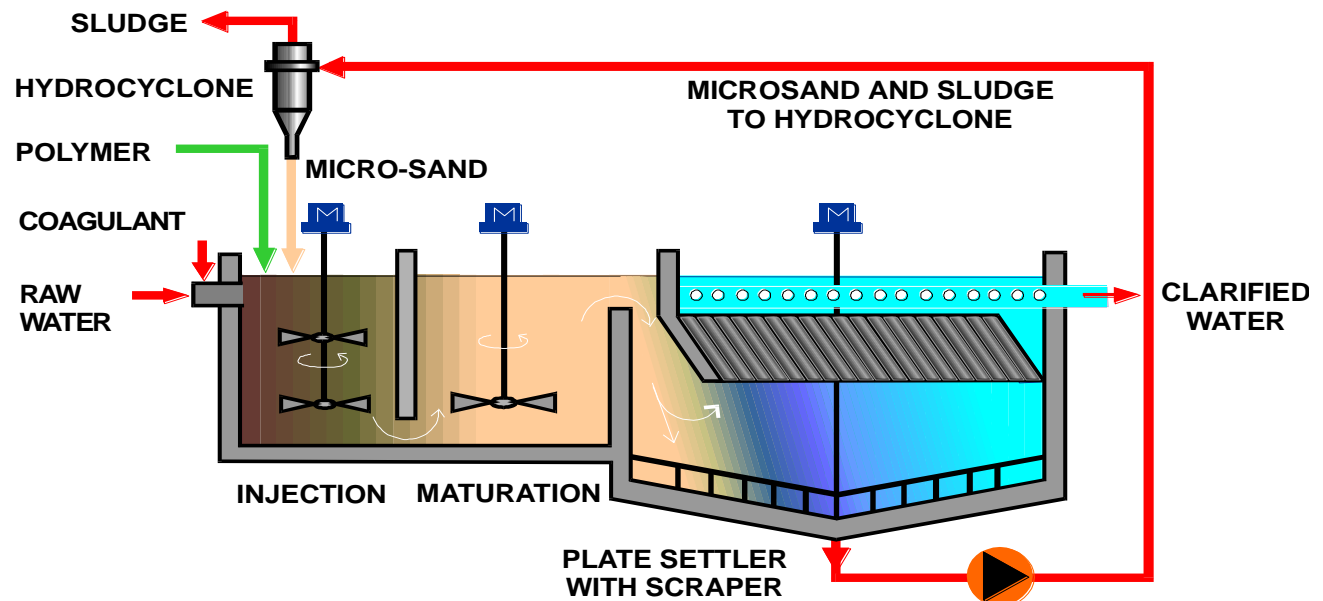
Secondary Pump Station Design



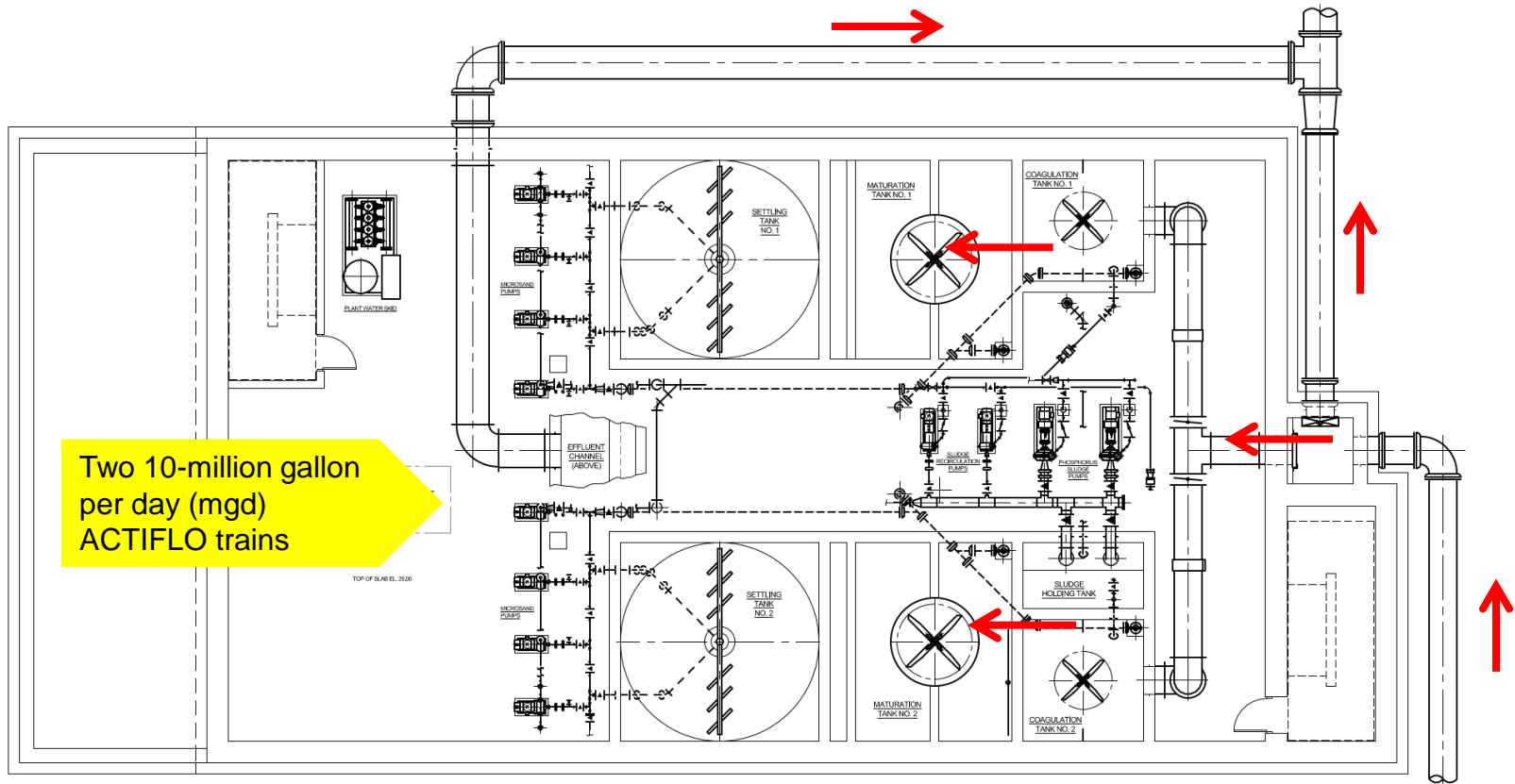
WPCF Upgrades Project – Phase 1 (cont.)

❑ Tertiary Treatment Building (TPB)

- ❑ Ballasted flocculation process was selected based on effectiveness and cost
 - ❑ Performed head to head piloting of three (3) phosphorus treatment technologies to determine most effective treatment option
- ❑ Removes phosphorus with coagulants, polymer and sand ballast



TPB Lower Level Design



TPB Construction Progress



WPCF Upgrades Project – Phase 1 (cont.)

❑ New Ultraviolet (UV) Disinfection System

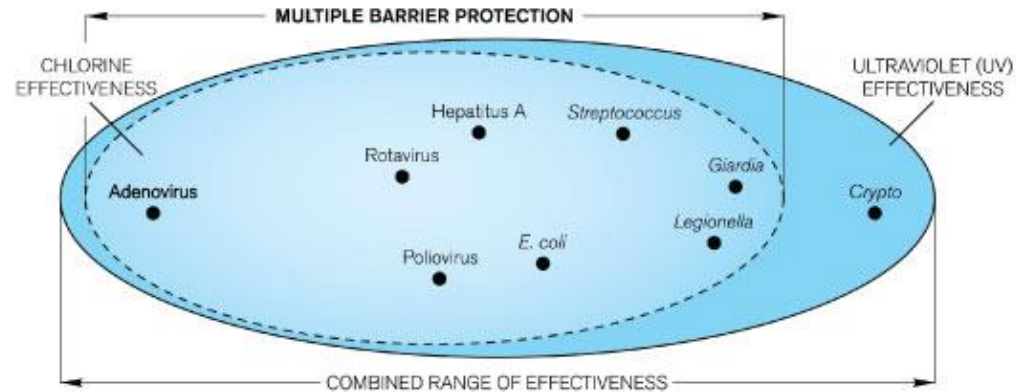
- ❑ Replace current, obsolete (circa 1989), flood prone UV system
- ❑ Replacement parts difficult to procure

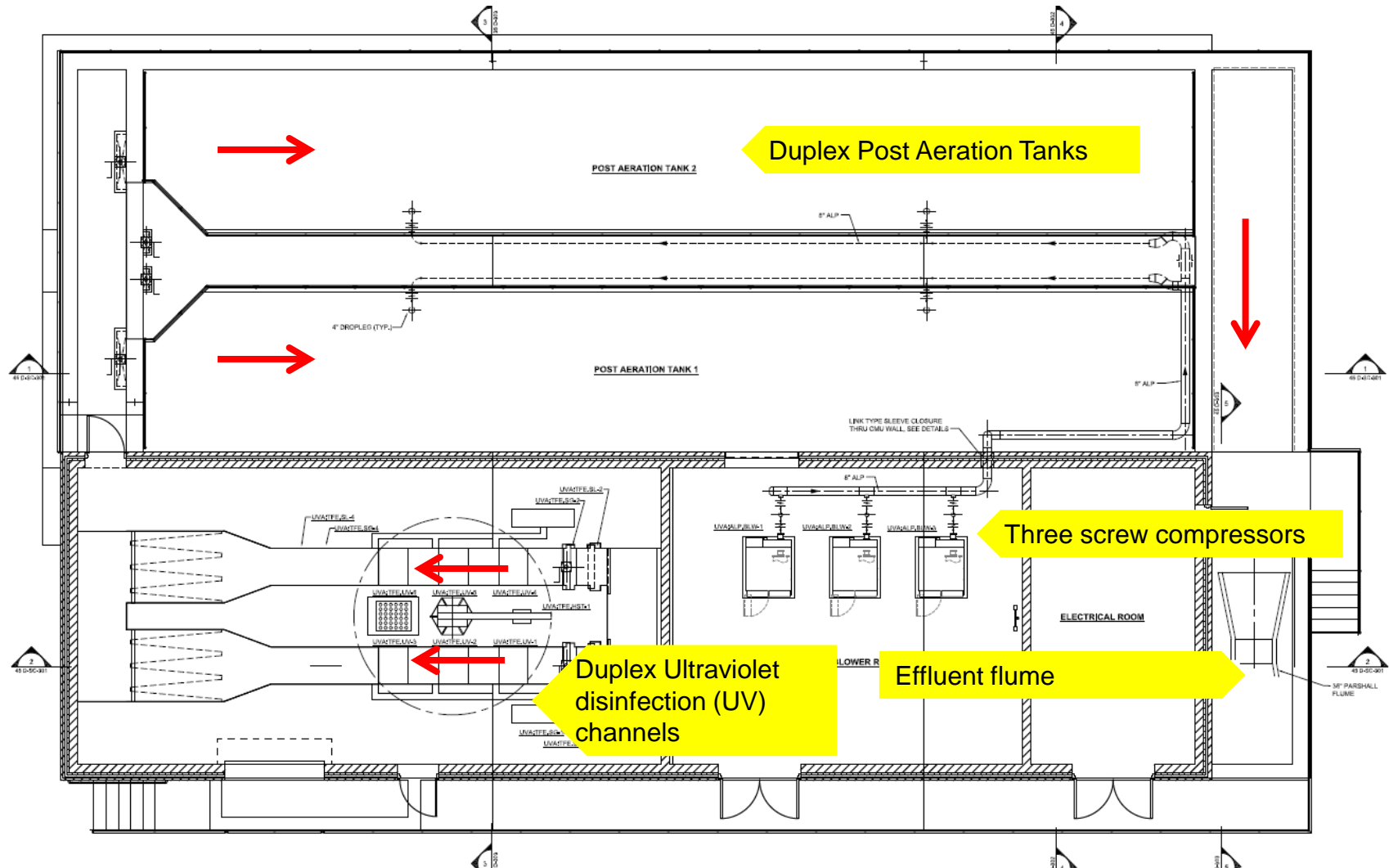
❑ Post Aeration Basins

- ❑ Flood prone
- ❑ Downstream and adjacent to the UV Disinfection System
 - ❑ Same building structure
- ❑ Permit requirement



UV Disinfection Design





UV/PA Construction Progress



WPCF Upgrades Project – Phase 1 (cont.)

❑ Multipoint Chemical Addition

- ❑ Necessary to consistently reduce total Phosphorus (TP) delivered to the tertiary phosphorus treatment process to 0.5 to 0.7 mg/L
- ❑ Feed points: Primary and Secondary Settling Tanks

❑ Gravity Thickener Rehabilitation

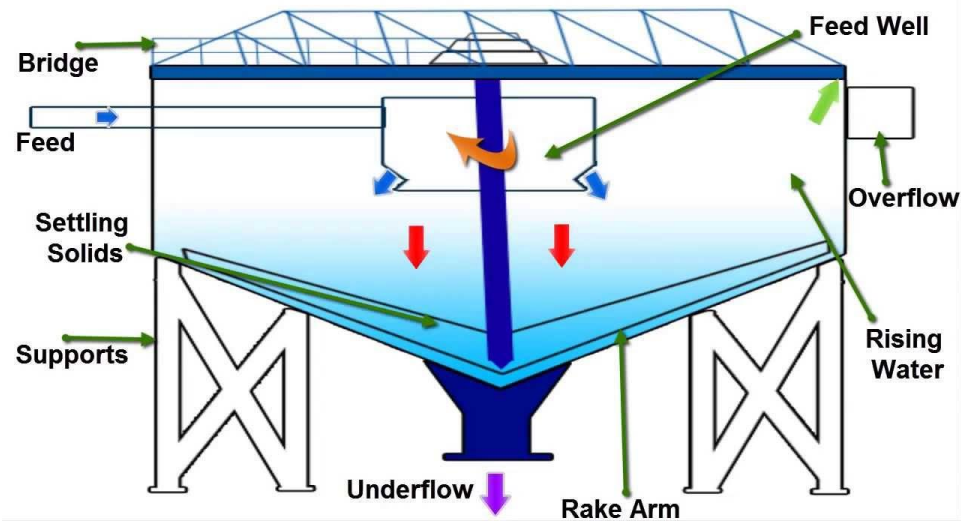
- ❑ Replace worn out mechanism
- ❑ Necessary to handle additional solids loading from tertiary phosphorus treatment process
- ❑ More efficient operations



Gravity Thickener Rehabilitation



Gravity Thickener Rehabilitation



WPCF Upgrades Project – Phase 1 (cont.)

❑ Instrumentation

- ❑ Include Supervisory Control and Data Acquisition (SCADA) and instrumentation for all processes necessary for the project
- ❑ Backbone of future SCADA system improvements

❑ Electrical

- ❑ Increase service capacity is necessary to handle additional electrical load
- ❑ New larger generator in an outdoor enclosure
 - ❑ Current generator to be transferred to the Board of Education
- ❑ Install new switchgear and motor control center (MCC) for secondary pump station and tertiary phosphorus treatment



WPCF – Interior and Below Grade



WPCF – Interior and Below Grade

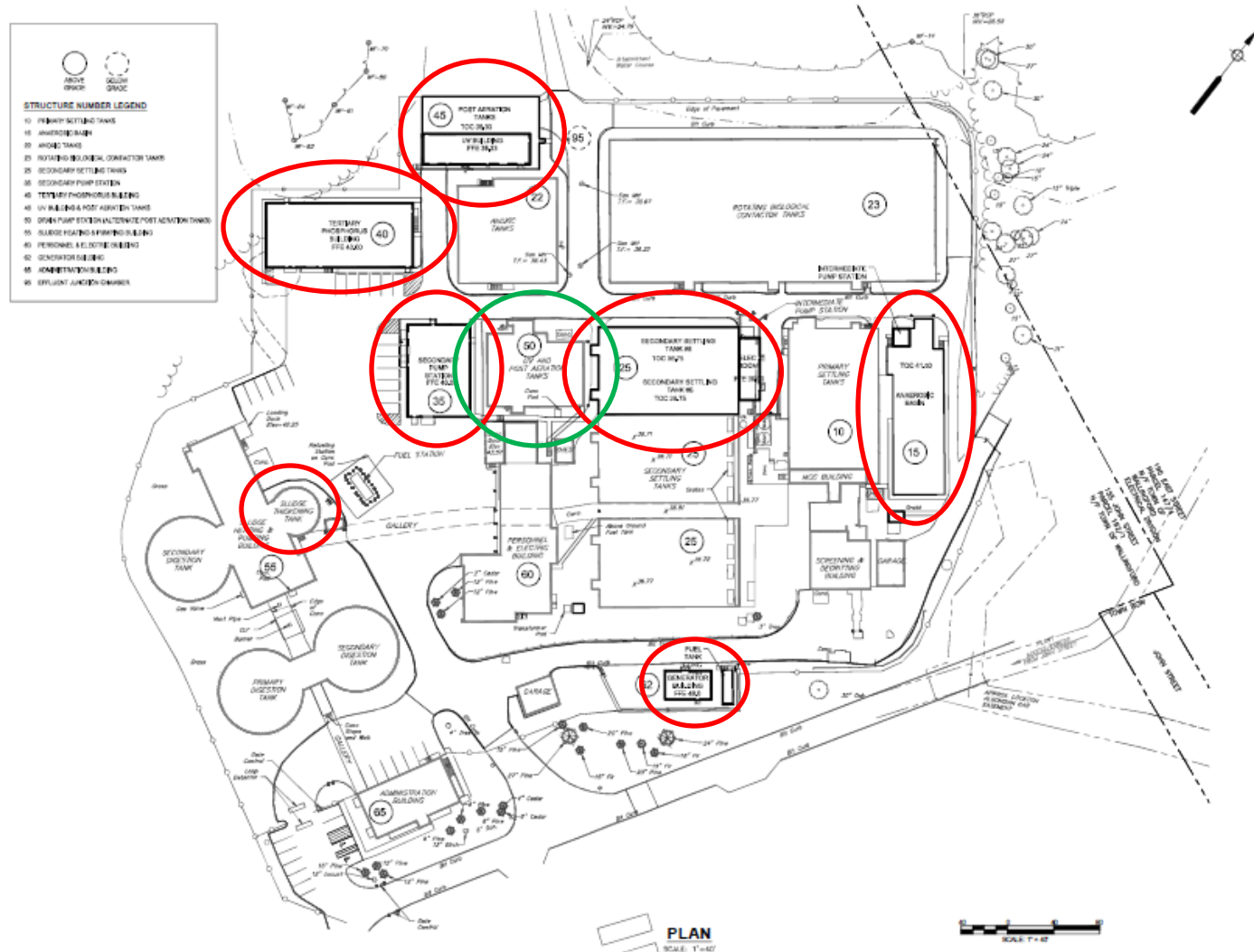


WPCF Upgrades Project – Phase 1 (cont.)

- ❑ Existing UV Disinfection and Post Aeration Basins
 - ❑ Structures to remain in place
 - ❑ During the non-Phosphorus season (November 1 – March 31) gravity flow can be directed through these structures to the outflow pipe
 - ❑ Avoids pumping costs via the Secondary Pump Station



WPCF Upgrades Project – Phase 1



WPCF Upgrades Project – Phase 2

- ❑ Fine Screen at the Headworks (Pretreatment)
 - ❑ Needed to remove finer particles that are detrimental to downstream physical, biological and chemical treatment processes; particularly when the primary settling tanks are not in operation
 - ❑ Initiate Design in FY 20-21
 - ❑ \$0.250M Fee (Cash)
 - ❑ Construction planned to begin in FY 22-23
 - ❑ \$2.643M Estimated Cost (Bond)



WPCF Upgrades Project – Phase 2 (cont.)

❑ Solids Handling

- ❑ Anaerobic digestion as currently practiced is not cost effective
 - ❑ Renovation of solids handling with anaerobic digestion at \$15.6M
or
 - ❑ Renovation of solids handling without anaerobic digestion at \$8.2M
- ❑ Storage for sludge is needed. Reuse two digester tanks for storage and provide new covers.
- ❑ Replace 1988 vintage dewatering facilities with two screw presses.
 - ❑ Will improve solids capture and reduce operating costs

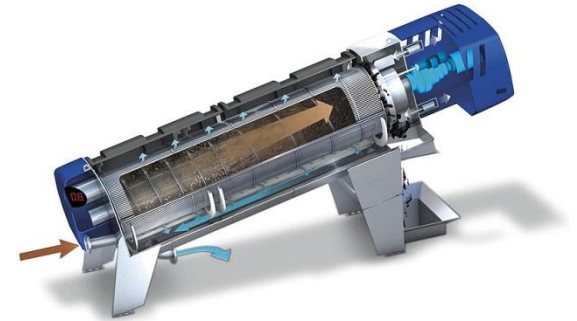


WPCF Upgrades Project – Phase 2 (cont.)

❑ Solids Handling (continued)

❑ Dewatering Presses

- ❑ Initiate Design in FY 22-23
 - ❑ \$0.414M Fee (Cash)
- ❑ Construction planned to begin in FY 23-24
 - ❑ \$3.901M Estimated Cost (Bond)



❑ Digester Conversion

- ❑ Begin Design in FY 23-24
 - ❑ \$0.741M Fee (Bond)
- ❑ Construction planned to begin in FY 24-25
 - ❑ \$5.436M Estimated Cost (Bond)



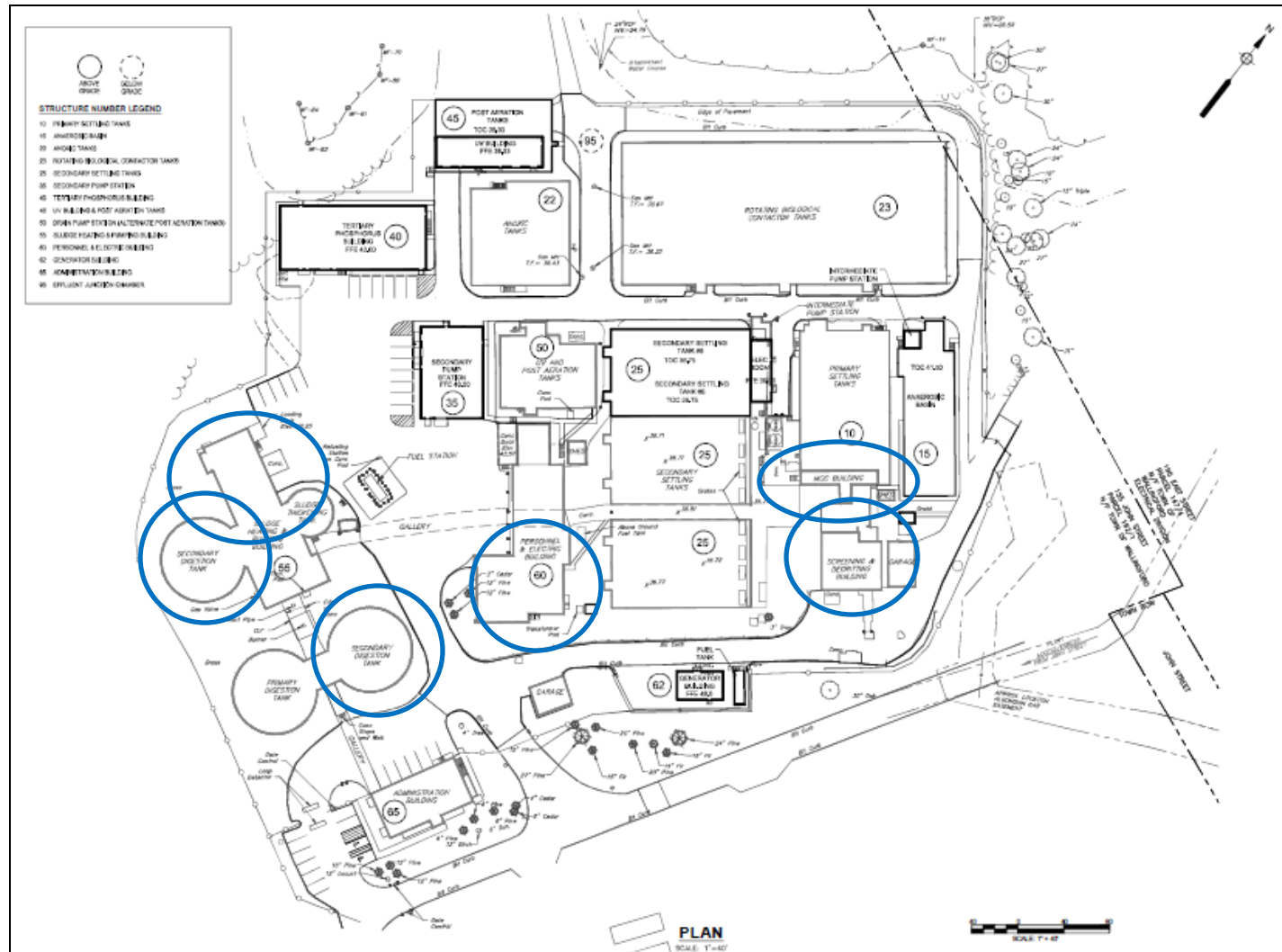
WPCF Upgrades Project – Phase 2 (cont.)

❑ Electrical Upgrades

- ❑ Existing electrical distribution systems in need of replacement
- ❑ Motor Control Centers (MCCs) outdated and replacement parts are difficult to procure
 - ❑ \$2.736M included in the 5-year CIP budget for FY 24-25



WPCF Upgrades Project – Phase 2 (cont.)

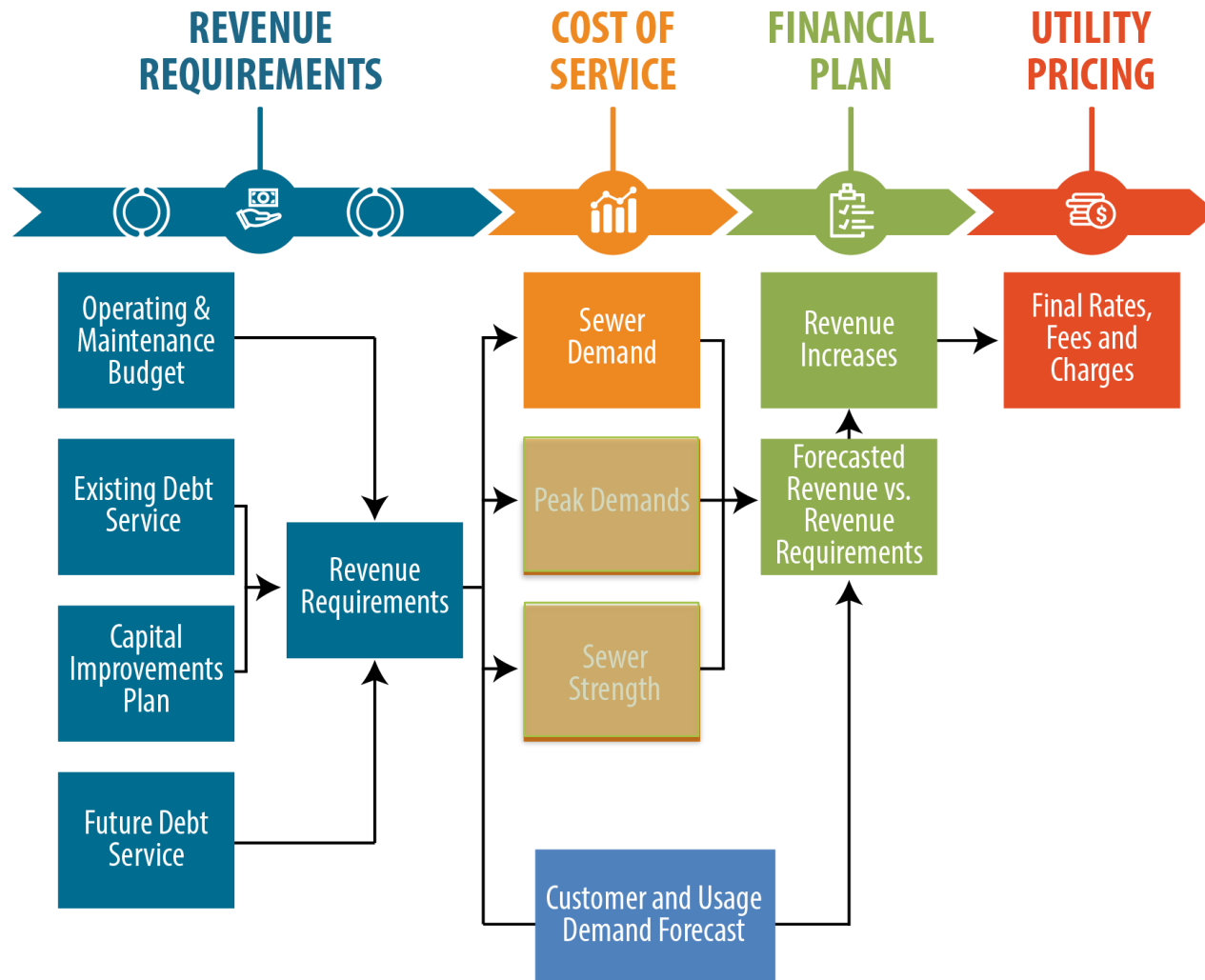


WPCF Upgrades CWF Budget

❑ Total Project Costs	\$58,257,740	
❑ Includes Contingency and Interest during Construction		
❑ Local Share	\$2,458,234	
❑ Design Fee (Grant Eligible)		
❑ Legal Costs		
❑ Administrative Expenses		
❑ Eligible Project Costs (IFO)	\$55,799,506	
❑ Project Grant	\$21,217,737	37.8102%
❑ Project Loan	\$34,581,769	



Cost of Service Study Approach

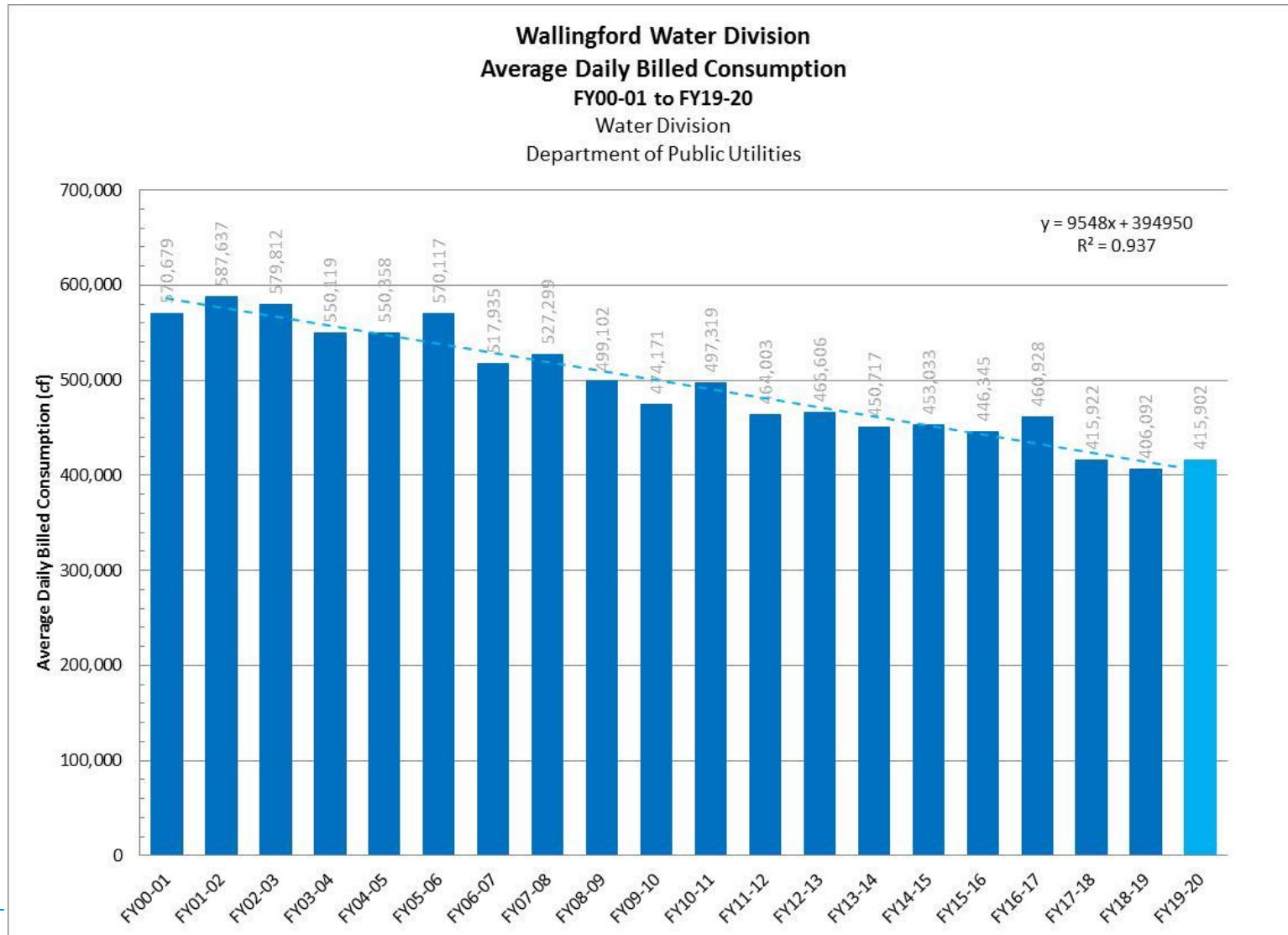


Cost of Service Study Approach

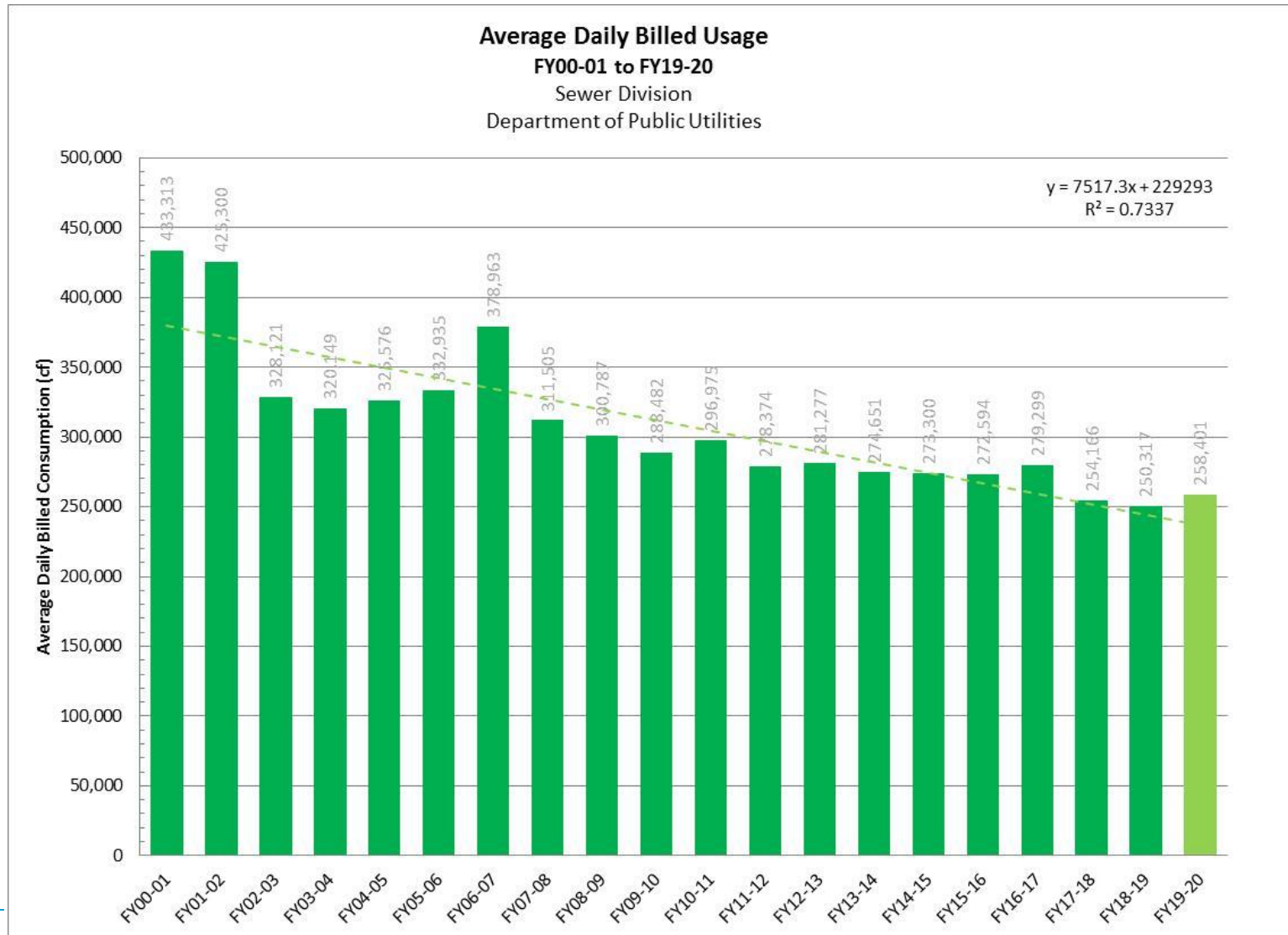
- **Revenue Requirements:**
Development of the full cost of providing sanitary sewer collection and treatment service.
- **Cost of Service:**
Allocation of revenue requirements to either customer classes or similar types of customers.
- **Financial Plan:**
Development of a financial plan to fund system revenue requirements over time.
- **Utility Pricing:**
Review of the current and alternative rate designs based on revenue needs and rate design pricing objectives with specific rate projections.



Historical Water Billable Consumption



Historical Sewer Billable Usage



Historical Sewer Division Rates

Effective Date	Usage Rate	Percent Change	5/8-inch Meter BSF	Percent Change
6/1/2001	\$2.89	0.00%	\$9.00	0.00%
6/1/2002	\$2.89	0.00%	\$9.00	0.00%
6/1/2003	\$2.89	0.00%	\$9.00	0.00%
6/1/2004	\$2.89	0.00%	\$9.00	0.00%
6/1/2005	\$2.89	0.00%	\$9.00	0.00%
6/1/2006	\$3.10	7.27%	\$11.64	29.33%
6/1/2007	\$3.31	6.77%	\$11.64	0.00%
6/1/2008	\$3.52	6.34%	\$11.64	0.00%
6/1/2009	\$3.73	5.97%	\$11.64	0.00%



Historical Sewer Division Rates (cont.)

	Effective Date	Usage Rate	Percent Change	5/8-inch Meter BSF	Percent Change	
2005 to 2013 Cumulative Usage Rate Increase = +81.66%	6/1/2010	\$4.35	16.62%	\$15.84	36.08%	2005 to 2012 Cumulative 5/8-inch BSF Increase = +147.56%
	6/1/2011	\$4.73	8.74%	\$15.84	0.00%	
	6/1/2012	\$5.12	8.25%	\$22.28	40.66%	
	6/1/2013	\$5.25	2.54%	\$22.28	0.00%	
	6/1/2014	\$5.25	0.00%	\$22.28	0.00%	
	6/1/2015	\$5.25	0.00%	\$22.28	0.00%	
	6/1/2016	\$5.25	0.00%	\$22.28	0.00%	
	6/1/2017	\$5.25	0.00%	\$22.28	0.00%	
	6/1/2018	\$5.25	0.00%	\$22.28	0.00%	
	6/1/2019	\$5.25	0.00%	\$22.28	0.00%	



Number of Sewer Customers

Class	5/8-inch Meter		3/4-inch Meter		1-inch Meter	
	Number of Customers	% of Total Meters	Number of Customers	% of Total Meters	Number of Customers	% of Total Meters
Single Family Residential	9,847	77.2495%	14	0.1098%	6	0.0471%
Flat Sewer Single Family	904	7.0919%				
Multi-family Residential	993	7.7901%	19	0.1491%	60	0.4707%
Commercial	409	3.2086%	64	0.5021%	103	0.8080%
Industrial	6	0.0471%	1	0.0078%	10	0.0784%
Institutional	44	0.3452%	6	0.0471%	16	0.1255%
Subtotal	12,203	95.7323%	104	0.8159%	195	1.5298%
Total	12,747					

- ❑ 5/8-, 3/4-, and 1-inch meters
 - ❑ Quantity of 12,502 water meters
 - ❑ 98.0780% of all sewer customers

Number of Sewer Customers (cont.)

Class	1 1/2-inch Meter		2-inch Meter		3-inch Meter		4-inch Meter	
	Number of Customers	% of Total Meters	Number of Customers	% of Total Meters	Number of Customers	% of Total Meters	Number of Customers	% of Total Meters
Single Family Residential	0	0.0000%	0	0.0000%	0	0.0000%	0	0.0000%
Flat Sewer Single Family								
Multi-family Residential	10	0.0784%	15	0.1177%	0	0.0000%	0	0.0000%
Commercial	83	0.6511%	47	0.3687%	6	0.0471%	0	0.0000%
Industrial	8	0.0628%	14	0.1098%	3	0.0235%	1	0.0078%
Institutional	13	0.1020%	40	0.3138%	5	0.0392%	0	0.0000%
Subtotal	114	0.8943%	116	0.9100%	14	0.1098%	1	0.0078%
Total	12,747							

- ❑ 1-1/2-, 2-, 3- and 4-inch meters
 - ❑ Quantity of 245 water meters for 1-1/2 inch and greater meters
 - ❑ 1.9220% of all sewer customers



Sewer Division Current Commitments

- ❑ WPCF Upgrades Project – Active Construction
 - ❑ \$55,799,506 Interim Funding Obligation with the State

- ❑ Planned Capital Projects (5-year CIP)
 - ❑ I-91 Pump Station, Force Main and Durham Road Sewer
 - ❑ Collection System Lining (I/I)
 - ❑ North and South Turnpike Sanitary Sewer Upgrades
 - ❑ Vehicles and Trucks
 - ❑ Fine Screens at the WPCF Headworks
 - ❑ Solids Handling at the WPCF
 - ❑ Dewatering Presses
 - ❑ Digester Conversion
 - ❑ Electrical Upgrades at the WPCF

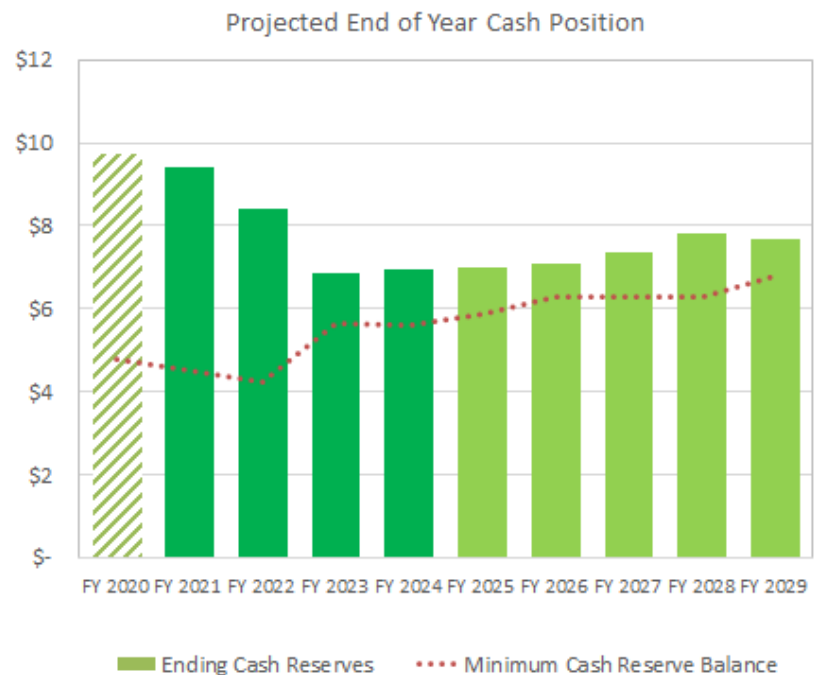
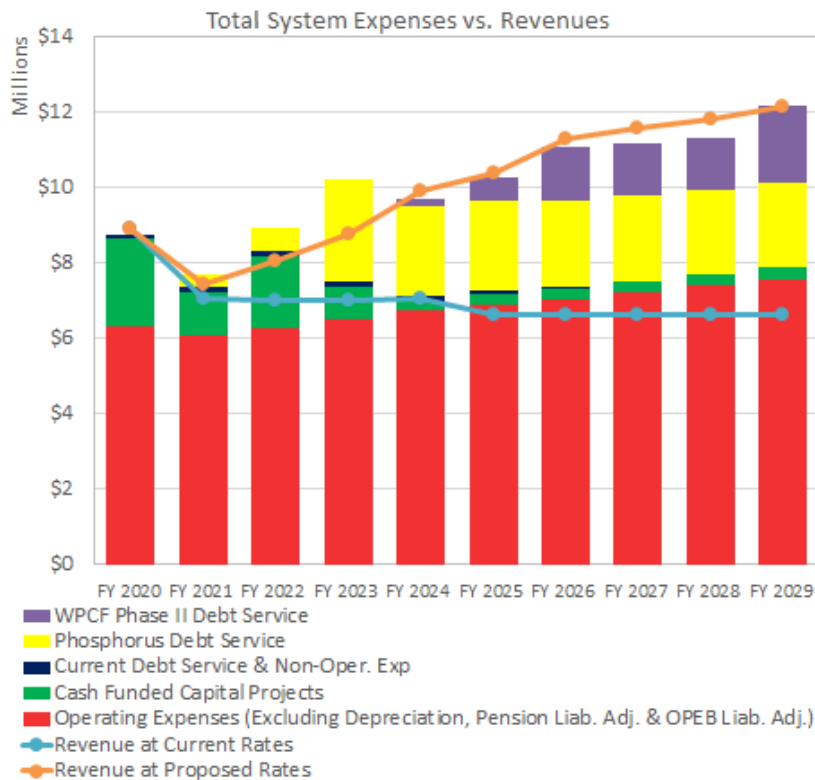


Sewer Division Commitments (cont.)

- ❑ Annual Operating Expenses
 - ❑ Labor – Wages and Salaries
 - ❑ Overhead, including benefits
 - ❑ Materials, parts and equipment
 - ❑ Utilities (Electric)
 - ❑ Nitrogen credit purchases
 - ❑ RBC Repairs
 - ❑ Inflow and Infiltration



Proposed Rate Model (FY21-24)



June 16, 2020

Proposed Rate Model (continued)

Financial Plan Control Panel: Fiscal Year: July 1 - June 30		FY 2019	FY 2020	FY 2021	FY 2022	FY 2023
Additional Rate Increase Needed to Maintain Minimum Cash Balance			0.0%	0.0%	0.0%	0.0%
Rate Scenario:	Model Calculated Rates	Flat Fee Basis (Quarterly CF):				
			1,650	1,200	1,200	1,200
Unit Rate Increase - July 2020 - September 2020				0.00%		
Unit Rate Increase			0.0%	9.00%	9.00%	12.5%
Quarterly Basic Service Fee (5/8" Meter) - July 2020 - September 2020				\$ 22.28		
Quarterly Basic Service Fee (5/8" Meter)		\$ 22.28	\$ 22.28	\$ 23.34	\$ 24.38	\$ 25.34
Unit Rate per CCF - July 2020 - September 2020				\$ 5.25	\$ -	\$ -
Unit Rate per CCF		\$ 5.25	\$ 5.25	\$ 5.72	\$ 6.24	\$ 7.02
Flat Fee per Quarter - July 2020 - September 2020		\$ 5.25	\$ -	\$ 108.91	\$ -	\$ -
Flat Fee per Quarter		\$ 108.91	\$ 108.91	\$ 91.98	\$ 99.26	\$ 109.58
Fiscal Year Month Effective		FY 2019 Bill				
Sample Flat Quarterly Bill - July - Sept. 2020	CCF: 1,650	\$ 108.91	\$ 108.91	\$ 108.91	\$ -	\$ -
Sample Flat Quarterly Bill	CCF: 1,200	\$ 108.91	\$ 108.91	\$ 91.98	\$ 99.26	\$ 109.58
Dollar Increase (Decrease)			\$ 0.00	\$ (16.93)	\$ 7.28	\$ 10.32
Percent Increase (Decrease)			0.00%	(15.5%)	7.9%	10.4%

Proposed Rate Model (continued)

Financial Plan Control Panel: Fiscal Year: July 1 - June 30		FY 2024	FY 2025	FY 2026	FY 2027	FY 2028	FY 2029
Additional Rate Increase Needed to Maintain Minimum Cash Balance		0.0%	0.0%	0.0%	0.0%	0.0%	0.0%
Rate Scenario:	Model Calculated Rates	1,200	1,200	1,200	1,200	1,200	1,200
Unit Rate Increase - July 2020 - September 2020							
Unit Rate Increase		15.0%	12.0%	11.0%	2.5%	2.5%	3.0%
Quarterly Basic Service Fee (5/8" Meter) - July 2020 - September 2020							
Quarterly Basic Service Fee (5/8" Meter)		\$ 27.09	\$ 27.98	\$ 28.23	\$ 28.82	\$ 29.42	\$ 30.05
Unit Rate per CCF - July 2020 - September 2020		\$ -	\$ -	\$ -	\$ -	\$ -	\$ -
Unit Rate per CCF		\$ 8.07	\$ 9.04	\$ 10.03	\$ 10.28	\$ 10.54	\$ 10.86
Flat Fee per Quarter - July 2020 - September 2020		\$ -	\$ -	\$ -	\$ -	\$ -	\$ -
Flat Fee per Quarter		\$ 123.93	\$ 136.46	\$ 148.59	\$ 152.18	\$ 155.90	\$ 160.37
Fiscal Year Month Effective							
Sample Flat Quarterly Bill - July - Sept. 2020	CCF: 1,650	\$ -	\$ -	\$ -	\$ -	\$ -	\$ -
Sample Flat Quarterly Bill	CCF: 1,200	\$ 123.93	\$ 136.46	\$ 148.59	\$ 152.18	\$ 155.90	\$ 160.37
Dollar Increase (Decrease)		\$ 14.35	\$ 12.53	\$ 12.13	\$ 3.59	\$ 3.72	\$ 4.47
Percent Increase (Decrease)		13.1%	10.1%	8.9%	2.4%	2.4%	2.9%

Basic Service Fee (BSF) Cost Allocation

- ❑ Current Basic Service Fee differential is based on the **purchase cost** of each water meter
- ❑ Industry standard fixed fees are typically based on the **relative flow factor** between meter sizes
 - ❑ A 5/8-inch meter can support 20 gallons per minute (Base = 1.00)
 - ❑ A 2-inch meter can support 160 gallons per minute ($160/20 = 8.00$)

Meter Size	Current BSF	Current BSF Factor	AWWA Flow Factor
5/8"	\$22.28	1.00	1.00
3/4"	\$29.72	1.33	1.50
1"	\$37.12	1.67	2.50
1 1/2"	\$82.40	3.70	5.00
2"	\$119.24	5.35	8.00
3"	\$172.96	7.76	16.00
4"	\$354.84	15.93	25.00

Meter Size Comparison (BSF)



5/8-inch meter



1-inch meter



2-inch meter



3-inch meter



Proposed Basic Service Fee (FY21-24)

Size of Meter	Quarterly Fee as of 6/1/12
5/8" or less	\$22.28
3/4"	\$29.72
1"	\$37.12
1-1/2"	\$82.40
2"	\$119.24
3"	\$172.96
4"	\$354.84
10"	\$1,330.24

BASIC SERVICE FEE

Size of Meter	Quarterly BSF as of 10/1/2020	Quarterly BSF as of 7/1/2021	Quarterly BSF as of 7/1/2022	Quarterly BSF as of 7/1/2023
5/8-inch	\$23.34	\$24.38	\$25.34	\$27.09
3/4-inch	\$35.01	\$36.57	\$38.01	\$40.64
1-inch	\$58.35	\$60.95	\$63.35	\$67.73
1 1/2-inch	\$116.70	\$121.90	\$126.70	\$135.45
2-inch	\$186.72	\$195.04	\$202.72	\$216.72
3-inch	\$373.44	\$390.00	\$405.44	\$433.44
4-inch	\$583.50	\$609.50	\$633.50	\$677.26



Proposed Usage Rate (FY21-24)

Rate as of
6/1/13
\$5.25 / 100 cf

USAGE CHARGE

Rate as of
10/1/2020
\$5.72 / 100 cf

Rate as of
7/1/2021
\$6.24 / 100 cf

Rate as of
7/1/2022
\$7.02 / 100 cf

Rate as of
7/1/2023
\$8.07 / 100 cf



Median Quarterly Increase (FY21)

Class	5/8-inch Meter		3/4-inch Meter		1-inch Meter	
	Number of Customers	FY20-21 Median Quarterly Increase	Number of Customers	FY20-21 Median Quarterly Increase	Number of Customers	FY20-21 Median Quarterly Increase
Single Family Residential	9,847	\$ 4.76	14	\$ 11.24	6	\$26.25
Flat Sewer Single Family	904	\$ (18.34)				
Multi-family Residential	993	\$ 7.41	19	\$ 14.01	60	\$55.60
Commercial	409	\$ 3.97	64	\$ 10.84	103	\$32.20
Industrial	6	\$ 4.89	1	\$ 28.95	10	\$27.31
Institutional	44	\$ 5.29	6	\$ 11.64	16	\$31.14
\$ Weighted Average	12,203	\$ 3.24	104	\$ 11.69	195	\$ 38.88



Median Quarterly Increase (FY21)

Class	1 1/2-inch Meter		2-inch Meter		3-inch Meter		4-inch Meter	
	Number of Customers	FY20-21 Median Quarterly Increase	Number of Customers	FY20-21 Median Quarterly Increase	Number of Customers	FY20-21 Median Quarterly Increase	Number of Customers	FY20-21 Median Quarterly Increase
Single Family Residential	0	\$ -	0	\$ -	0	\$ -	0	\$ -
Flat Sewer Single Family								
Multi-family Residential	10	\$ 77.92	15	\$ 182.48	0	\$ -	0	\$ -
Commercial	83	\$ 66.03	47	\$ 109.78	6	\$ 441.06	0	\$ -
Industrial	8	\$ 42.23	14	\$ 104.49	3	\$ 316.81	1	\$ 370.08
Institutional	13	\$ 47.52	40	\$ 91.27	5	\$ 230.88	0	\$ -
\$ Weighted Average	114	\$ 63.29	116	\$ 112.16	14	\$ 339.37	1	\$ 370.08



Sewer Flat Rate Customers

- ❑ 904 customers
 - ❑ 7.09% of all sewer customers
 - ❑ Can only be a single family residential dwelling
- ❑ Currently charged BSF + 1,650 cf of usage
 - ❑ $2,200 \text{ cf} \times 75\% = 1,650 \text{ cf}$
- ❑ Proposal is BSF + 1,200 cf of usage
 - ❑ $1,600 \text{ cf} \times 75\% = 1,200 \text{ cf}$
 - ❑ With 1,600 cf being the current mean water usage for a single family 5/8-inch residential customer with at least 4 quarters of billable data



Sewer Flat Future Rates

Quarterly Charge
as of 6/1/13
\$108.91

Quarterly Sewer
Flat Charge
as of 10/1/2020
\$91.98

Quarterly Sewer
Flat Charge
as of 7/1/2021
\$99.26

Quarterly Sewer
Flat Charge
as of 7/1/2022
\$109.58

Quarterly Sewer
Flat Charge
as of 7/1/2023
\$123.93



Water Miscellaneous Charges

- ❑ Updated charges to reflect current labor, overhead (including benefits), material and equipment costs
 - ❑ Water meter installation fee
 - ❑ Damaged, missing or frozen water meter
 - ❑ Cost for water service installation (no excavation)
- ❑ Water Division will no longer excavate and backfill for water services, including temporary and permanent pavement repairs
 - ❑ Water Division will install the tap, water service and curb box



Water Miscellaneous Charges (cont.)

- ❑ Tampering with a water meter charge
 - ❑ \$250.00 for the first occurrence
 - ❑ \$500.00 for the second occurrence

- ❑ Establish a protocol, and cost, for removing and resetting a water meter or turning a water service off and on more than once per calendar year
 - ❑ No consequence for turning water off and on once per year due to lack of payment

- ❑ Updated construction permit fees
 - ❑ \$75.00 for installation or repair of water services, or repair of water mains
 - ❑ \$300.00 for installation of water main(s) or fire service lines



Sewer Miscellaneous Charges

- ❑ Updated charges to reflect current labor, overhead (including benefits), material and equipment costs
 - ❑ Septage receiving fee

- ❑ Updated construction permit fees
 - ❑ \$75.00 for installation or repair of sewer laterals
 - ❑ \$300.00 for installation of sewer main(s)



Payment Terms and Conditions

- ❑ \$35.00 fee per transaction for checks returned for insufficient funds
 - ❑ Staff time (labor and overhead) to process
- ❑ \$80.00 charge for conducting a final meter read and/or inspection and the issuance of a final water and/or sewer bill
 - ❑ Staff time (labor and overhead) and equipment (vehicle) to process and prepare this special request
- ❑ As a reminder, payments are due on the last calendar day of each month
 - ❑ Or by the end of the next business day if the last day of the month falls on a weekend or holiday



Acknowledgements and Thank You's

- ❑ William Phelan
- ❑ Larry Regan, CPA
- ❑ Jay Pawlowski
- ❑ Erik Krueger, P.E.
- ❑ Pat Crabtree
- ❑ Dennis Szetko
- ❑ J.R. Richard
- ❑ Ken Bradstreet



Next Steps

- ❑ July 16, 2020 at 6:30 p.m. – Thursday (Tonight)
 - ❑ Water and Sewer Rate Public Hearing
 - ❑ Parisi Council Chambers, 45 South Main Street

- ❑ July 21, 2020 at 6:30 p.m. – Tuesday
 - ❑ PUC Motion to Approve / Modify / Disapprove Charges

- ❑ July 27, 2020 – Monday
 - ❑ Publish Rates in Record-Journal

- ❑ October 1, 2020 - Thursday
 - ❑ Effective Date of New Rates and Charges for Bills Rendered On or After October 1, 2020 following 21-day Appeal Period



Discussion and Questions

- ❑ Water and Sewer Divisions Office
- ❑ 203-949-2660



WATER AND SEWER USER CHARGES
DEPARTMENT OF PUBLIC UTILITIES
WALLINGFORD, CONNECTICUT
Effective October 1, 2020

(As adopted July 21, 2020)

Legend: Existing text and charges
~~Text to be deleted~~
New or revised text, or updated or new charges
New text as of March 17, 2020
New text as of June 16, 2020
New text as of July 16, 2020

Pursuant to Chapters 102 and 103 of the Connecticut General Statutes, as amended, and Chapter XIV of the Charter of the Town of Wallingford, the Board of Public Utilities Commissioners and the Water Pollution Control Authority of the Town of Wallingford approved and established the following water and sewer charges, which revised charges shall become effective for all water **consumption** and sewer usage ~~and service rendered~~ **invoiced** on or after **July 1, 2020**.

WATER DIVISION CHARGES

TERMS AND CONDITIONS:

This rate is applicable to all water consumers of the Town of Wallingford when the water supply for said service originates from **surface water** reservoirs, **groundwater** wells and other facilities owned or used by the Town of Wallingford or its Water Division.

Water service is available by application only and will be on the basis of measurement through one meter. Consumers serviced by more than one service for the same property shall be separately metered for each service and shall be charged the applicable rates for each separate meter. Consumers with one service, ~~but~~ **though** multi-metered, shall be charged the applicable rate for each individual meter.

In order to serve a limited number of consumers in areas where water service from the Wallingford system is not available, the Town of Wallingford, through its Water Division or Public Utilities Commission, may at its option, arrange to acquire water supply and service from other than its own sources. When such arrangements are made, the rates and charges listed herein shall be increased to reflect any additional costs for both water supply and facilities related to the particular installation but in no case shall the rates or charges associated with the special service installation be less than those shown in this schedule.

SERVICE POLICY:

The Town of Wallingford, through its Public Utilities Commission and Water Division, reserves the right to furnish water service in accordance with the Rules and Regulations of the Water Division established by the Board of Public Utilities Commissioners of the Town of Wallingford adopted September 17, 1996, as amended, and also in accordance with Connecticut General Statutes Chapter 102, as amended.

All water service of the Water Division is rendered under and subject to the rules and regulations of the Water Division as presently established and amended from time to time, and the Technical Standards adopted by the staff of the Water Division as revised from time to time.

QUARTERLY USAGE CONSUMPTION RATE CHARGES

METERED CHARGE:

The quarterly ~~rate~~ **charge** for water service shall consist of the **Basic Service Fee (BSF)** plus the consumption ~~usage~~ charge as tabulated herein per meter for all consumers.

BASIC SERVICE FEE

<u>Size of Meter</u>	<u>Quarterly Basic Service Fee as of 6/1/2007</u>
5/8-inch or less	\$15.11
3/4-inch	\$17.20
1-inch	\$31.29
1 1/2-inch	\$52.22
2-inch	\$88.31
3-inch	\$103.13
4-inch	\$168.32
10-inch	\$499.11

USAGE CHARGE

Rate as of
6/1/2015
\$4.09/100 cf

NON-METERED CHARGE:

For those services which are not metered, the quarterly charge for such service shall be the Basic Service Fee for a 5/8-inch meter as listed above plus the applicable quarterly consumption ~~usage~~ charge based on a quarterly consumption of ~~2,200~~ **1,600** cubic feet. This total quarterly charge for non-metered service shall be as follows:

Quarterly Charge
as of 6/1/2015
\$105.09

Quarterly Charge
as of 10/1/2020
\$80.55

Non-metered installations shall be limited to those services in place as of December 31, 1985, or those services installed with the written consent of the Wallingford Water Division after the above date. All customers presently receiving service under a non-metered installation may, at their own expense, modify the service to permit the installation of a meter.

PARTIAL BILLING PERIOD

Service rendered for less than a billing cycle shall be billed based on a ~~monthly~~ pro rata charge of the quarterly Basic Service Fee plus consumption.

PRIVATE FIRE LINE CHARGES:

	Quarterly Fee as of 6/1/2007
Hydrants	\$66.44
Up to 2-inch Fire Line	\$7.31
2 1/2-inch Fire Line	\$11.30
3-inch Fire Line	\$16.61
4-inch Fire Line	\$29.24
6-inch Fire Line	\$66.44
8-inch Fire Line	\$118.27
10-inch Fire Line	\$184.70
12-inch Fire Line	\$265.76
16-inch Fire Line	\$867.70

SERVICE INSTALLATION CHARGES

~~SERVICE INSTALLATION WITH EXCAVATION ONLY, NO PAVEMENT REPAIRS – TOWN ROADS: A service from the water main to inside the curb line includes the following: Tapping the water main, installing a corporation stop, copper tubing, curb stop and curb box. This type of installation includes excavation and backfilling only and does not include temporary paving or final pavement restoration. The water meter charges are not included.~~

Effective January 1, 2011	<u>Size of Service</u>				Service Length
	1"	1-1/4"	1-1/2"	2"	
Long Service	\$3,580	\$3,655	\$3,915	\$4,130	Greater than 16', less than 30'
Short Service	\$2,095	\$2,150	\$2,385	\$2,525	Less than 16'

Any installation exceeding 30' will be charged \$1,080.00 for each full 10' increment and \$540 for any partial increment.

In the event that the Division installs a service in a state road, the cost will be determined on the basis of the actual cost for labor, tools, materials and equipment. A surcharge of an additional 36.10% on the cost of labor will be applied to reflect overhead. In addition, in the event "Rock in Trench" is encountered in any service installation an additional cost of \$120 per cubic yard of rock/concrete excavated shall be charged if the Water Division elects to perform the excavation.

SERVICE INSTALLATION WITH EXCAVATION AND PAVEMENT REPAIRS - TOWN ROADS: A service from the water main to inside the curb line includes the following: Tapping the water main, installing a corporation stop, copper tubing, curb stop and curb box. This type of installation includes excavation, backfilling, temporary paving and final pavement restoration. The water meter charges are not included.

Effective January 1, 2011	<u>Size of Service</u>				Service Length
	1"	1-1/4"	1-1/2"	2"	
Long Service	\$5,190	\$5,270	\$5,530	\$5,745	Greater than 16', less than 30'
Short Service	\$2,920	\$2,975	\$3,210	\$3,350	Less than 16'

Any installation exceeding 30' will be charged \$1,700.00 for each full 10' increment and \$850 for any partial increment.

In the event that the Division installs a service in a state road, the cost will be determined on the basis of the cost for labor, tools, materials and equipment. A surcharge of an additional 36.10% on the cost of labor actual will be applied to reflect overhead. In addition, in the event "Rock in Trench" is encountered in any service installation an additional cost of \$120 per cubic yard of rock/concrete excavated shall be charged if the Water Division elects to perform the excavation.

SERVICE INSTALLATION ONLY, NO EXCAVATION OR PAVEMENT REPAIRS - TOWN ROADS: A **water** service from the water main to inside the curb line includes the following: Tapping the water main, installing a corporation stop, copper tubing, curb stop, and curb box. This type of service does not include excavation, backfilling, temporary paving, or final pavement restoration, which will be the Owner's responsibility. The water meter charges are not included.

Effective January 1, 2011	<u>Size of Service</u>				Service Length
	1"	1-1/4"	1-1/2"	2"	
Long Service	\$475	\$550	\$810	\$1,025	Greater than 16', less than 30'

Short Service \$405 \$460 \$695 \$835 Less than 16'

Any installation exceeding 30' will be charged \$90.00 for each full 10' increment and \$45 for any partial increment.

Effective July 1, 2020	<u>Size of Service</u>			
	1-inch	1 1/4-inch	1 1/2-inch	2-inch
Short Service	\$660.00	\$780.00	\$980.00	\$1,170.00
Long Service	\$970.00	\$1,110.00	\$1,310.00	\$1,560.00
Per Additional Foot	\$65.00	\$65.00	\$65.00	\$70.00

A Short Service installation is a water service less than sixteen linear feet (16'-0") as measured from the centerline of the water main to the customer's side of the curb box assembly. A Long Service is a water service greater than sixteen linear feet (16'-0") and less than thirty linear feet (30'-0") as measured from the centerline of the water main to the customer's side of the curb box assembly.

Any water service installation greater than thirty linear feet (30'-0") will be charged per additional linear foot or portion thereof as measured from the centerline of the water main to the customer's side of the curb box assembly.

In the event that the **Water** Division installs a service in a state road, the cost will be determined on the basis of the actual cost for labor, tools, materials and equipment. A surcharge of an additional **45.10%** ~~50.07%~~ ~~36.10%~~ on the cost of labor will be applied to reflect overhead. ~~In addition, in the event "Rock in Trench" is encountered in any service installation an additional cost of \$120 per cubic yard of rock/concrete excavated shall be charged if the Water Division elects to perform the excavation.~~

WATER METER INSTALLATION FEE:

<u>Size of Meter</u>				
5/8"	3/4"	1"	1-1/2"	1-1/2"
(P.D.)	(P.D.)	(P.D.)	(P.D.)	(Turbine)
\$145.00	\$195.00	\$245.00	\$535.00	\$915.00
2"	2"	3"	4"	10"
(P.D.)	(Turbine)	(Turbine)	(Turbine)	(Turbine)
\$750.00	\$1,120.00	\$1,150.00	\$2,370.00	\$8,885.00

5/8-inch	3/4-inch	1-inch	1 1/2-inch	2-inch
<u>\$305.00</u>	<u>\$305.00</u>	<u>\$355.00</u>	<u>\$1,090.00</u>	<u>\$1,240.00</u>
<u>\$345.00</u>	<u>\$350.00</u>	<u>\$410.00</u>	<u>\$1,310.00</u>	<u>\$1,535.00</u>
3-inch	4-inch	6-inch	8-inch	10-inch
<u>\$1,505.00</u>	<u>\$2,550.00</u>	<u>\$5,745.00</u>	<u>\$9,145.00</u>	<u>\$24,295.00</u>
<u>\$1,565.00</u>	<u>\$2,610.00</u>	<u>\$5,620.00</u>	<u>\$9,020.00</u>	<u>\$24,550.00</u>

Notes:

- ~~Costs for~~ **For** temporary meter installations, when allowed by the Division for periods not to exceed one year, the cost of the meter only will be refundable provided that the meter is returned to the **Water** Division in acceptable operating condition.
- Existing services and/or meters shall be renewed at no charge with the provision that they be the same size at the same location and be in need of renewal in the opinion of the Water Division.

MISCELLANEOUS CHARGES

- **Damaged Water Infrastructure and Miscellaneous Work**
 - Replacement or repair of damaged, ~~or~~ missing **or frozen** meter, **radio read unit, outside reader unit, fire** hydrants, and other miscellaneous work **as a result of customer action or negligence**; ~~will~~ **be** charged based upon the actual costs of labor, tools, materials and equipment. A surcharge of an additional ~~36.10%~~ **50.07%** on the cost of labor will be applied to reflect overhead.
 - **Tampering with a water meter will be invoiced at \$250.00 for the first occurrence, \$500.00 for the second occurrence and \$1,000 for each occurrence thereafter.**
- **Service Turn Off and Turn On**
 - **The Water Division will remove and reset a water meter, or turn off and turn on the water at the curb box one (1) cycle per calendar year [1 on/off per calendar year] during normal business hours for the customer's convenience such as interior plumbing work that requires the water to the structure to be turned off, spending winters in a warmer climate, or shut-off and resumption of service due to account nonpayment.**
 - **Should the customer require more than 1 on/off per calendar year, the charge will be \$80.00 per visit to remove a meter, reset a meter, turn the water off at the curb box or turn the water on at the curb box. There is no charge to remove a meter for a building demolition.**
- **Construction Permit Fees:**
 - Installation or repair of water services, repairs of water mains: ~~\$20.00~~ **\$75.00**
 - Installation of mainline water mains **or fire service lines**: ~~\$50.00~~ **\$300.00**

A separate permit is required for each independent main line or service installation and/or repair.

- Bulk Water (Tank Truck Fill):
 - \$20.00 plus the water ~~usage charge~~ **consumption rate** in effect at the time per 100 cubic feet for all water purchased.

After **Hours** Charge

- ~~After hours charge (for~~ **For** call-out work performed outside regular Division working hours if such call-out is for customer's convenience): ~~\$140.00~~ **\$260.00**

SEWER DIVISION CHARGES

TERMS AND CONDITIONS:

These rates shall apply to all users of sanitary sewer service of the Town of Wallingford, Connecticut.

SERVICE POLICY:

The Town of Wallingford, through its Water Pollution Control Authority (**WPCA**) and Sewer Division, reserves the right to furnish sanitary sewer service in accordance with policies presently established by the Water Pollution Control Authority of the Town of Wallingford and **the** Sewer Authority which adopted Rules and Regulations of the Sewer Division on September 17, 1996, as amended, and also in accordance with Connecticut General Statutes Chapter 103, as amended.

All sewer service of the Sewer Division is rendered under and subject to the rules and regulations of the Sewer Division as presently established and amended from time to time and the technical standards adopted by the staff of the Sewer Division as revised from time to time.

QUARTERLY USAGE ~~RATE~~ CHARGES

METERED CHARGE:

The quarterly ~~usage rate charge~~ **charge** for sewer service shall consist of a Basic Service Fee (**BSF**) plus a Usage Charge based on seventy-five **percent** (75%) of metered water consumption for customers having metered water service, except for those customers listed as exceptions.

BASIC SERVICE FEE

Size of Meter	Quarterly Fee as of 6/1/12
5/8" or less	\$22.28
3/4"	\$29.72
1"	\$37.12
1-1/2"	\$82.40
2"	\$119.24

3"	\$172.96
4"	\$354.84
10"	\$1,330.24

Size of Meter	Quarterly BSF as of <u>10/1/2020</u>	Quarterly BSF as of 7/1/2021	Quarterly BSF as of 7/1/2022	Quarterly BSF as of 7/1/2023
5/8-inch	\$23.34	\$24.38	\$25.34	\$27.09
3/4-inch	\$35.01	\$36.57	\$38.01	\$40.64
1-inch	\$58.35	\$60.95	\$63.35	\$67.73
1 1/2-inch	\$116.70	\$121.90	\$126.70	\$135.45
2-inch	<u>\$186.72</u>	\$195.04	\$202.72	\$216.72
3-inch	\$373.44	\$390.00	\$405.44	\$433.44
4-inch	\$583.50	\$609.50	\$633.50	\$677.26

USAGE CHARGE

Rate as of
6/1/13
\$5.25 / 100 cf

Rate as of <u>10/1/2020</u>	Rate as of <u>7/1/2021</u>	Rate as of <u>7/1/2022</u>	Rate as of <u>7/1/2023</u>
<u>\$5.72</u> \$5.64 / 100 cf	<u>\$6.24</u> \$6.09 / 100 cf	<u>\$7.02</u> \$6.76 / 100 cf	<u>\$8.07</u> \$7.77 \$7.64 / 100 cf

EXCEPTIONS:

1. Quarterly Sewer Flat Charge Rate: For those services which do not use Wallingford water but do utilize the Wallingford sanitary sewer facilities and are not metered, or those customers of the Wallingford Water Division having non-metered water service. The quarterly charge for such service shall be the Basic Service Fee for a 5/8-inch meter as listed above plus the applicable quarterly usage charge based on 75% of a quarterly ~~consumption~~ **usage** of ~~2,200~~ **1,600** cubic feet of water **equal to 1,200 cubic feet of water**. This total quarterly charge for flat rate service shall be as follows:

Quarterly Charge
as of 6/1/13
\$108.91

Quarterly Sewer Flat Charge as of <u>10/1/2020</u>	Quarterly Sewer Flat Charge as of <u>7/1/2021</u>	Quarterly Sewer Flat Charge as of <u>7/1/2022</u>	Quarterly Sewer Flat Charge as of <u>7/1/2023</u>
<u>\$91.98</u> \$90.57	<u>\$99.26</u> \$97.46	<u>\$109.58</u> \$106.46	<u>\$123.93</u> \$118.77

~~\$91.02~~

2. Residential accounts ~~who~~ **that** do not use Wallingford water but do utilize Wallingford sanitary sewer facilities may, at their own expense, modify their private water service to permit the installation of a water meter. The quarterly ~~rate~~ **charge** for such sewer service shall be the ~~existing~~ **current** Quarterly Usage ~~Rate~~ Charge consisting of a Basic Service Fee plus a Usage Charge based on seventy-five percent (75%) of the metered water consumption.

Services so modified shall then remain as metered accounts. Those metered accounts shall then be subject to the rules and regulations of the Water and Sewer Divisions as presently established and amended from time to time.

3. Industrial or commercial accounts utilizing Wallingford water in conjunction with their own supply and using Wallingford sewer facilities shall determine the total flow discharged to the Wallingford ~~sewers~~ **sanitary sewer facilities** to the satisfaction of the **Sewer** Division through the installation of an approved sewer meter. All costs of such installations including required calibration and maintenance shall be borne by the Owner. Such customers shall be billed based on that flow actually discharged to the **sanitary** sewer.

4. Industrial or commercial accounts ~~which~~ **that** obtain all their water from Wallingford, but do not discharge all to the Wallingford sanitary sewer, may request that their sewer charge be adjusted, provided the user determines the sewer flow to the satisfaction **and acceptance** of the **Sewer** Division.

PARTIAL BILLING PERIOD

Service rendered for less than a billing cycle shall be billed on a ~~monthly~~ pro rata charge of the quarterly Basic Service Fee plus water consumption or sanitary sewer usage.

MISCELLANEOUS CHARGES

- Septage receiving fee (In-Town Septage Only): ~~\$70~~ **\$100** / 1,000 gallons

This charge shall supersede all septage receiving fees previously established by the Water Pollution Control Authority of the Town of Wallingford.

- Construction Permit Fees:
 - Installation or repair of sewer laterals, repairs of mainline **sanitary** sewers: ~~\$20.00~~ **\$75.00**
 - Installation of mainline **sanitary** sewers: ~~\$50.00~~ **\$300.00**

A separate permit is required for each independent main line or service installation and/or repair.

WATER AND SEWER PAYMENT TERMS AND CONDITIONS

WATER AND SEWER DIVISIONS PAYMENT POLICIES:

1. All charges of the Water and Sewer Divisions are due by the date indicated on the bill. Interest shall be charged on the first day following the due date on any unpaid water and/or sewer charge balance on that date. Interest shall be charged in accordance with the General Statutes of the State of Connecticut.
2. A property lien may be filed by means of a continuation certificate upon the benefited property, after thirty days from the due date of the bill, for all unpaid balances of \$10.00 or more. Lien certificates shall be filed and lien fees charged in accordance with the General Statutes of the State of Connecticut.
3. Partial payment shall be applied first to interest charges, then to water and/or sewer charges and lastly to lien charges.
- 4. A \$35.00 fee per transaction will be charged to a customer's account for checks returned due to insufficient funds.**
- 5. A charge of \$80.00 will be rendered for conducting a final meter read and/or inspection, and the issuance of a final water and/or sewer bill.**

H:\Business Office\Rates - Water and Sewer\2020 Water and Sewer Rate Revisions\Rates and Charges Document\Proposed FY21 Water and Sewer Charges v.NHA 2020-07-16.docx

Proposed Quarterly Sewer Rate Increases - Median Usage

Sewer Division

Department of Public Utilities

Town of Wallingford

		2019-20	2020-21	2021-22	2022-23	2023-24
Rate per 100 cu. Ft.		\$5.25	\$5.72	\$6.24	\$7.02	\$8.07
5/8-inch Meter (11,299 meters)						
	Quarterly Basic Service Charge	\$22.28	\$23.34	\$24.38	\$25.34	\$27.09
1,600	cu. ft. bill x 75% = 1,200 cu. ft.	\$63.00	\$67.23	\$74.88	\$84.24	\$96.84
	Rate per 100 cu. ft.					
Total Quarterly Cost		\$85.28	\$90.57	\$99.26	\$109.58	\$123.93
Amount of Increase			\$5.29	\$8.69	\$10.32	\$14.35
% of Increase			6.20%	9.59%	10.40%	13.10%
3/4-inch Meter (104 meters)						
	Quarterly Basic Service Charge	\$29.72	\$35.01	\$36.57	\$38.01	\$40.64
2,500	cu. ft. bill x 75% = 1,875 cu. ft.	\$98.44	\$105.05	\$117.00	\$131.63	\$151.31
	Rate per 100 cu. ft.					
Total Quarterly Cost		\$128.16	\$140.06	\$153.57	\$169.64	\$191.95
Amount of Increase			\$11.90	\$13.51	\$16.07	\$22.32
% of Increase			9.28%	9.65%	10.46%	13.16%
1-inch Meter (195 meters)						
	Quarterly Basic Service Charge	\$37.12	\$58.35	\$60.95	\$63.35	\$67.73
6,200	cu. ft. bill x 75% = 4,650 cu. ft.	\$244.13	\$260.52	\$290.16	\$326.43	\$375.26
	Rate per 100 cu. ft.					
Total Quarterly Cost		\$281.25	\$318.87	\$351.11	\$389.78	\$442.99
Amount of Increase			\$37.62	\$32.24	\$38.67	\$53.21
% of Increase			13.38%	10.11%	11.01%	13.65%
1 1/2-inch Meter (114 meters)						
	Quarterly Basic Service Charge	\$82.40	\$116.70	\$121.90	\$126.70	\$135.45
10,961	cu. ft. bill x 75% = 8,221 cu. ft.	\$431.59	\$460.57	\$512.97	\$577.10	\$663.41
	Rate per 100 cu. ft.					
Total Quarterly Cost		\$513.99	\$577.27	\$634.87	\$703.80	\$798.86
Amount of Increase			\$63.28	\$57.61	\$68.92	\$95.07
% of Increase			12.31%	9.98%	10.86%	13.51%
2-inch Meter (116 meters)						
	Quarterly Basic Service Charge	\$119.24	\$186.72	\$195.04	\$202.72	\$216.72
14,000	cu. ft. bill x 75% = 10,500 cu. ft.	\$551.25	\$588.26	\$655.20	\$737.10	\$847.35
	Rate per 100 cu. ft.					
Total Quarterly Cost		\$670.49	\$774.98	\$850.24	\$939.82	\$1,064.07
Amount of Increase			\$104.49	\$75.26	\$89.58	\$124.25
% of Increase			15.58%	9.71%	10.54%	13.22%
3-inch Meter (14 meters)						
	Quarterly Basic Service Charge	\$172.96	\$373.44	\$390.08	\$405.44	\$433.44
49,500	cu. ft. bill x 75% = 37,125 cu. ft.	\$1,949.06	\$2,079.93	\$2,316.60	\$2,606.18	\$2,995.99
	Rate per 100 cu. ft.					
Total Quarterly Cost		\$2,122.02	\$2,453.37	\$2,706.68	\$3,011.62	\$3,429.43
Amount of Increase			\$331.35	\$253.31	\$304.94	\$417.81
% of Increase			15.61%	10.33%	11.27%	13.87%
4-inch Meter (1 meter)						
	Quarterly Basic Service Charge	\$354.84	\$583.50	\$609.50	\$633.50	\$677.25
53,493	cu. ft. bill x 75% = 40,120 cu. ft.	\$2,106.30	\$2,247.72	\$2,503.49	\$2,816.42	\$3,237.68
	Rate per 100 cu. ft.					
Total Quarterly Cost		\$2,461.14	\$2,831.22	\$3,112.99	\$3,449.92	\$3,914.93
Amount of Increase			\$370.08	\$281.77	\$336.94	\$465.01
% of Increase			15.04%	9.95%	10.82%	13.48%

Proposed Quarterly Combined Water and Sewer Rate Increase Summary - Median Usage
Water Division and Sewer Division
Department of Public Utilities
Town of Wallingford

		2019-20	2020-21	2021-22	2022-23	2023-24
5/8-inch Meter (11,299 meters)						
Water	Rate per 100 cu. Ft	\$4.09	\$4.09	\$4.09	\$4.09	\$4.09
Sewer	Rate per 100 cu. Ft	\$5.25	\$5.72	\$6.24	\$7.02	\$8.07
Water	Basic Service Fee	\$15.11	\$15.11	\$15.11	\$15.11	\$15.11
Sewer	Basic Service Fee	\$22.28	\$23.34	\$24.38	\$25.34	\$27.09
1,600	cu. ft. bill - Water	\$65.44	\$65.44	\$65.44	\$65.44	\$65.44
1,600	cu. ft. bill x 75% =	1,200	\$63.00	\$67.23	\$74.88	\$84.24
	cu. ft.					\$96.84
Quarterly Water Cost		\$80.55	\$80.55	\$80.55	\$80.55	\$80.55
Quarterly Sewer Cost		\$85.28	\$90.57	\$99.26	\$109.58	\$123.93
Combined Quarterly Cost		\$165.83	\$171.12	\$179.81	\$190.13	\$204.48
Amount of Increase			\$5.29	\$8.69	\$10.32	\$14.35
Overall % Increase			3.19%	5.08%	5.74%	7.55%
3/4-inch Meter (104 meters)						
Water	Rate per 100 cu. Ft	\$4.09	\$4.09	\$4.09	\$4.09	\$4.09
Sewer	Rate per 100 cu. Ft	\$5.25	\$5.72	\$6.24	\$7.02	\$8.07
Water	Basic Service Fee	\$17.20	\$17.20	\$17.20	\$17.20	\$17.20
Sewer	Basic Service Fee	\$29.72	\$35.01	\$36.57	\$38.01	\$40.64
2,500	cu. ft. bill - Water	\$102.25	\$102.25	\$102.25	\$102.25	\$102.25
2,500	cu. ft. bill x 75% =	1,875	\$98.44	\$105.05	\$117.00	\$131.63
	cu. ft.					\$151.31
Quarterly Water Cost		\$119.45	\$119.45	\$119.45	\$119.45	\$119.45
Quarterly Sewer Cost		\$128.16	\$140.06	\$153.57	\$169.64	\$191.95
Combined Quarterly Cost		\$247.61	\$259.51	\$273.02	\$289.09	\$311.40
Amount of Increase			\$11.90	\$13.51	\$16.07	\$22.32
Overall % Increase			4.81%	5.21%	5.88%	7.72%
1-inch Meter (195 meters)						
Water	Rate per 100 cu. Ft	\$4.09	\$4.09	\$4.09	\$4.09	\$4.09
Sewer	Rate per 100 cu. Ft	\$5.25	\$5.72	\$6.24	\$7.02	\$8.07
Water	Basic Service Fee	\$31.29	\$31.29	\$31.29	\$31.29	\$31.29
Sewer	Basic Service Fee	\$37.12	\$58.35	\$60.95	\$63.35	\$67.73
6,200	cu. ft. bill	\$253.58	\$253.58	\$253.58	\$253.58	\$253.58
6,200	cu. ft. bill x 75% =	4,650	\$244.13	\$260.52	\$290.16	\$326.43
	cu. ft.					\$375.26
Quarterly Water Cost		\$284.87	\$284.87	\$284.87	\$284.87	\$284.87
Quarterly Sewer Cost		\$281.25	\$318.87	\$351.11	\$389.78	\$442.99
Combined Quarterly Cost		\$566.12	\$603.74	\$635.98	\$674.65	\$727.86
Amount of Increase			\$37.62	\$32.24	\$38.67	\$53.20
Overall % Increase			6.65%	5.34%	6.08%	7.89%
1 1/2-inch Meter (114 meters)						
Water	Rate per 100 cu. Ft	\$4.09	\$4.09	\$4.09	\$4.09	\$4.09
Sewer	Rate per 100 cu. Ft	\$5.25	\$5.72	\$6.24	\$7.02	\$8.07
Water	Basic Service Fee	\$52.22	\$52.22	\$52.22	\$52.22	\$52.22
Sewer	Basic Service Fee	\$82.40	\$116.70	\$121.90	\$126.70	\$135.45
10,961	cu. ft. bill	\$448.30	\$448.30	\$448.30	\$448.30	\$448.30
10,961	cu. ft. bill x 75% =	8,221	\$431.59	\$460.57	\$512.97	\$577.10
	cu. ft.					\$663.41
Quarterly Water Cost		\$500.52	\$500.52	\$500.52	\$500.52	\$500.52
Quarterly Sewer Cost		\$513.99	\$577.27	\$634.87	\$703.80	\$798.86
Combined Quarterly Cost		\$1,014.51	\$1,077.79	\$1,135.40	\$1,204.32	\$1,299.39
Amount of Increase			\$63.28	\$57.61	\$68.92	\$95.07
Overall % Increase			6.24%	5.34%	6.07%	7.89%

Water Division and Sewer Division
Department of Public Utilities
Town of Wallingford

		2019-20	2020-21	2021-22	2022-23	2023-24
2-inch Meter (116 meters)						
Water	Rate per 100 cu. Ft	\$4.09	\$4.09	\$4.09	\$4.09	\$4.09
Sewer	Rate per 100 cu. Ft	\$5.25	\$5.72	\$6.24	\$7.02	\$8.07
Water	Basic Service Fee	\$88.31	\$88.31	\$88.31	\$88.31	\$88.31
Sewer	Basic Service Fee	\$119.24	\$186.72	\$195.04	\$202.72	\$216.72
14,000	cu. ft. bill	\$572.60	\$572.60	\$572.60	\$572.60	\$572.60
14,000	cu. ft. bill x 75% =	\$551.25	\$588.26	\$655.20	\$737.10	\$847.35
10,500	cu. ft.					
Quarterly Water Cost		\$660.91	\$660.91	\$660.91	\$660.91	\$660.91
Quarterly Sewer Cost		\$670.49	\$774.98	\$850.24	\$939.82	\$1,064.07
Combined Quarterly Cost		\$1,331.40	\$1,435.89	\$1,511.15	\$1,600.73	\$1,724.98
Amount of Increase			\$104.49	\$75.26	\$89.58	\$124.25
Overall % Increase			7.85%	5.24%	5.93%	7.76%
3-inch Meter (14 meters)						
Water	Rate per 100 cu. Ft	\$4.09	\$4.09	\$4.09	\$4.09	\$4.09
Sewer	Rate per 100 cu. Ft	\$5.25	\$5.72	\$6.24	\$7.02	\$8.07
Water	Basic Service Fee	\$103.13	\$103.13	\$103.13	\$103.13	\$103.13
Sewer	Basic Service Fee	\$172.96	\$373.44	\$390.08	\$405.44	\$433.44
49,500	cu. ft. bill	\$2,024.55	\$2,024.55	\$2,024.55	\$2,024.55	\$2,024.55
49,500	cu. ft. bill x 75% =	\$1,949.06	\$2,079.93	\$2,316.60	\$2,606.18	\$2,995.99
37,125	cu. ft.					
Quarterly Water Cost		\$2,127.68	\$2,127.68	\$2,127.68	\$2,127.68	\$2,127.68
Quarterly Sewer Cost		\$2,122.02	\$2,453.37	\$2,706.68	\$3,011.62	\$3,429.43
Combined Quarterly Cost		\$4,249.70	\$4,581.05	\$4,834.36	\$5,139.30	\$5,557.11
Amount of Increase			\$331.35	\$253.31	\$304.94	\$417.81
Overall % Increase			7.80%	5.53%	6.31%	8.13%
4-inch Meter (1 meter)						
Water	Rate per 100 cu. Ft	\$4.09	\$4.09	\$4.09	\$4.09	\$4.09
Sewer	Rate per 100 cu. Ft	\$5.25	\$5.72	\$6.24	\$7.02	\$8.07
Water	Basic Service Fee	\$168.32	\$168.32	\$168.32	\$168.32	\$168.32
Sewer	Basic Service Fee	\$354.84	\$583.50	\$609.50	\$633.50	\$677.25
53,493	cu. ft. bill	\$2,187.88	\$2,187.88	\$2,187.88	\$2,187.88	\$2,187.88
53,493	cu. ft. bill x 75% =	\$2,106.30	\$2,247.72	\$2,503.49	\$2,816.42	\$3,237.68
40,120	cu. ft.					
Quarterly Water Cost		\$2,356.20	\$2,356.20	\$2,356.20	\$2,356.20	\$2,356.20
Quarterly Sewer Cost		\$2,461.14	\$2,831.22	\$3,112.99	\$3,449.92	\$3,914.93
Combined Quarterly Cost		\$4,817.34	\$5,187.42	\$5,469.19	\$5,806.12	\$6,271.13
Amount of Increase			\$370.08	\$281.76	\$336.94	\$465.01
Overall % Increase			7.68%	5.43%	6.16%	8.01%

FY20-21 Summary of Median Sewer Charge Increases (\$)
Sewer Division
Department of Public Utilities
Town of Wallingford

Class	5/8-inch Meter		3/4-inch Meter		1-inch Meter		1 1/2-inch Meter		2-inch Meter		3-inch Meter		4-inch Meter	
	Number of Customers	FY20-21 Median Quarterly Increase	Number of Customers	FY20-21 Median Quarterly Increase	Number of Customers	FY20-21 Median Quarterly Increase	Number of Customers	FY20-21 Median Quarterly Increase	Number of Customers	FY20-21 Median Quarterly Increase	Number of Customers	FY20-21 Median Quarterly Increase	Number of Customers	FY20-21 Median Quarterly Increase
Single Family Residential	9,847	\$ 4.76	14	\$ 11.24	6	\$26.25	0	\$ -	0	\$ -	0	\$ -	0	\$ -
Flat Sewer Single Family	904	\$ (18.34)												
Multi-family Residential	993	\$ 7.41	19	\$ 14.01	60	\$55.60	10	\$ 77.92	15	\$ 182.48	0	\$ -	0	\$ -
Commercial	409	\$ 3.97	64	\$ 10.84	103	\$32.20	83	\$ 66.03	47	\$ 109.78	6	\$ 441.06	0	\$ -
Industrial	6	\$ 4.89	1	\$ 28.95	10	\$27.31	8	\$ 42.23	14	\$ 104.49	3	\$ 316.81	1	\$ 370.08
Institutional	44	\$ 5.29	6	\$ 11.64	16	\$31.14	13	\$ 47.52	40	\$ 91.27	5	\$ 230.88	0	\$ -
\$ Weighted Average	12,203	\$ 3.24	104	\$ 11.69	195	\$ 38.88	114	\$ 63.29	116	\$ 112.16	14	\$ 339.37	1	\$ 370.08

Meter Size and Class Quantities

Sewer Division

Department of Public Utilities

Town of Wallingford

Class	5/8-inch Meter		3/4-inch Meter		1-inch Meter		1 1/2-inch Meter		2-inch Meter		3-inch Meter		4-inch Meter	
	Number of Customers	% of Total Meters	Number of Customers	% of Total Meters	Number of Customers	% of Total Meters	Number of Customers	% of Total Meters	Number of Customers	% of Total Meters	Number of Customers	% of Total Meters	Number of Customers	% of Total Meters
Single Family Residential	9,847	77.2495%	14	0.1098%	6	0.0471%	0	0.0000%	0	0.0000%	0	0.0000%	0	0.0000%
Flat Sewer Single Family	904	7.0919%												
Multi-family Residential	993	7.7901%	19	0.1491%	60	0.4707%	10	0.0784%	15	0.1177%	0	0.0000%	0	0.0000%
Commercial	409	3.2086%	64	0.5021%	103	0.8080%	83	0.6511%	47	0.3687%	6	0.0471%	0	0.0000%
Industrial	6	0.0471%	1	0.0078%	10	0.0784%	8	0.0628%	14	0.1098%	3	0.0235%	1	0.0078%
Institutional	44	0.3452%	6	0.0471%	16	0.1255%	13	0.1020%	40	0.3138%	5	0.0392%	0	0.0000%
Subtotal	12,203	95.7323%	104	0.8159%	195	1.5298%	114	0.8943%	116	0.9100%	14	0.1098%	1	0.0078%
Total	12,747						12,747							