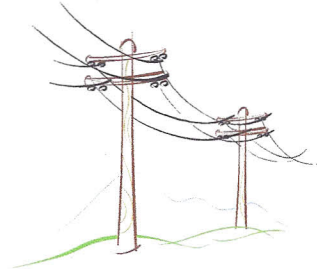


Down or Sagging Wires

If you encounter a sagging or down wire, stay as far away from it as you can.



Treat all down wires as “live”. Even though the power might be out in your neighborhood, power lines can still be energized and pose a danger. Even if you believe that a down wire is telephone or cable TV, treat it as though it is a live electric wire and call the Wallingford Electric Division emergency line at (203) 265-5055 at any time or Customer Service at (203) 294-2020 Monday through Friday, 8:30 AM through 5:00 PM. We will inspect it and confirm that it is a communications line and not energized.

Live power lines can energize objects around them, such as puddles, fences, mailboxes and metal buildings. Keep a safe distance of at least 25 feet.

Keep your children and pets inside and away from any sagging or down lines.