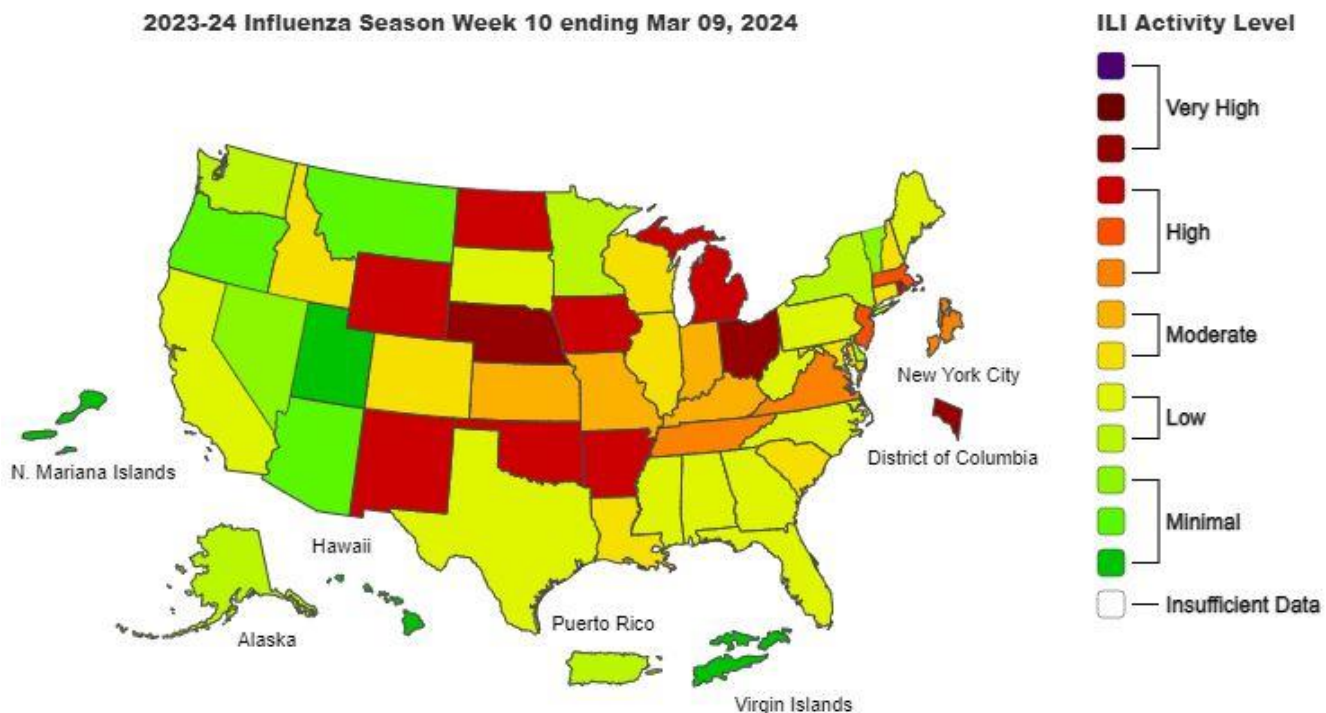


MONTHLY UPDATE: March 2024

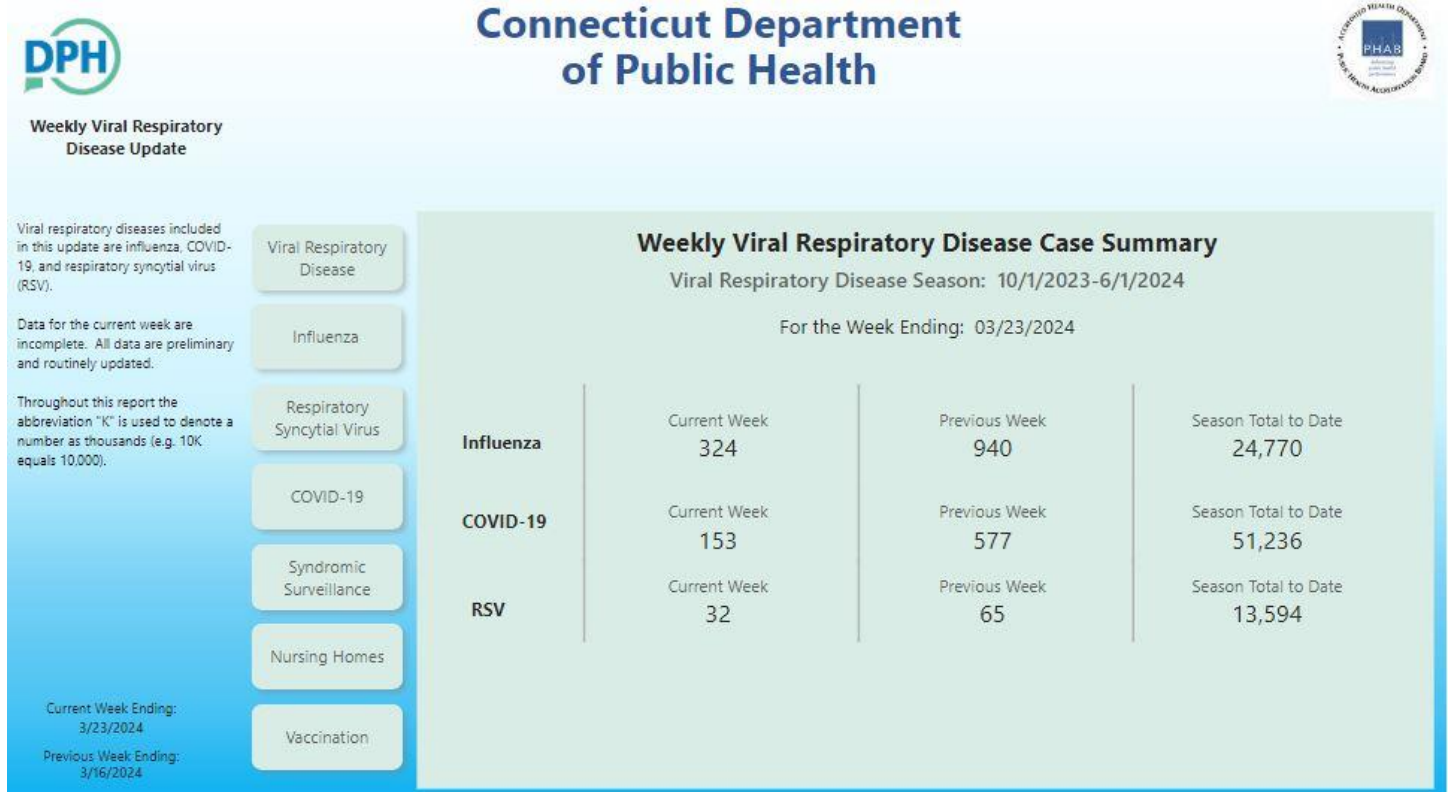
Monthly Viral Respiratory Diseases Update week ending 3/23/2024.

This report brings up-to-date data on viral respiratory diseases (VRD) in Wallingford, CT and information and resources regarding VRD. VRDs included in this report are COVID-19, influenza, and respiratory syncytial virus (RSV). VRD 2023-2024 season in this report starts on September 2023 until May 2024. Data in this report was collected from Local Health Department Portal surveillance system provided by Connecticut Department of Public Health (CT DPH) and the CT Electronic Disease Surveillance System (CTEDSS). There is a decline in all the VRDs from the previous report period for state-wide data as is seen in the CT DPH charts below.

According to the CDC “Flu View”, week ending March 16, 2024, Seasonal influenza activity remains elevated nationally but is decreasing, as indicated in the map below. Note that CT is listed as low to moderate activity level as of March 9, 2024. <https://www.cdc.gov/flu/weekly/index.htm#ORIAM>

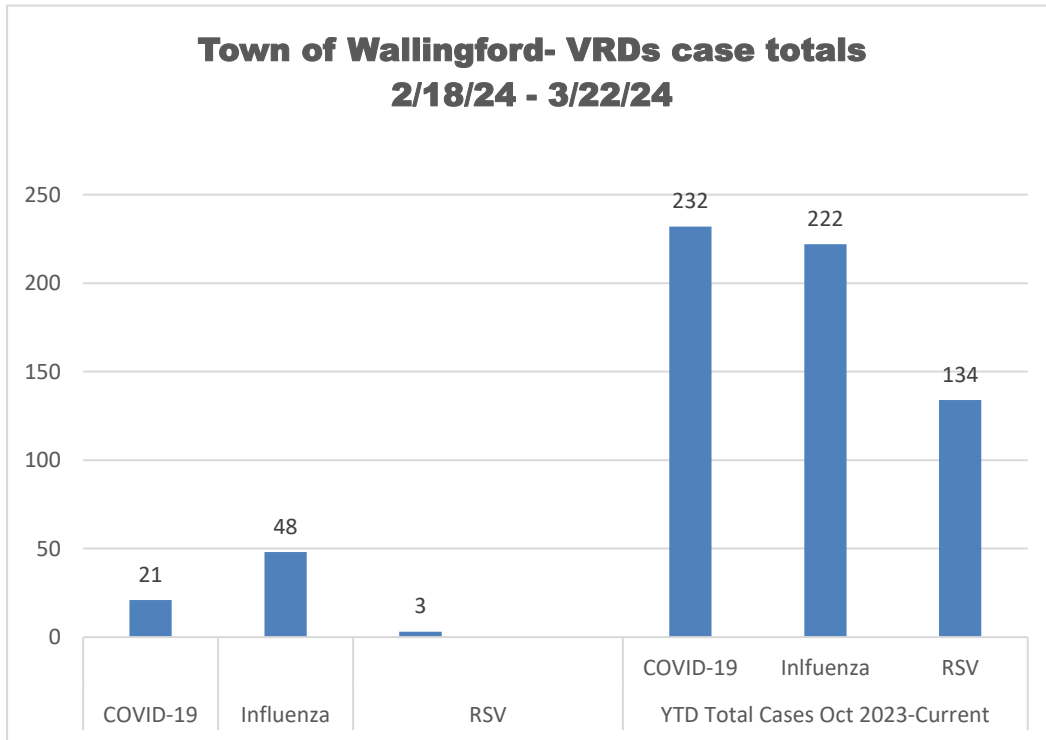


**The following charts summarize the CT Statewide VRDs Cases
week ending 3/23/24**



<https://data.ct.gov/Health-and-Human-Services/Connecticut-Reportable-Disease-Case-List/qhtt-czu2>

Town of Wallingford VDS week ending 3/22/24
(Surveillance Season: 10/1/23 - 6/1/24)



<https://edss.dph.ct.gov/maven/>

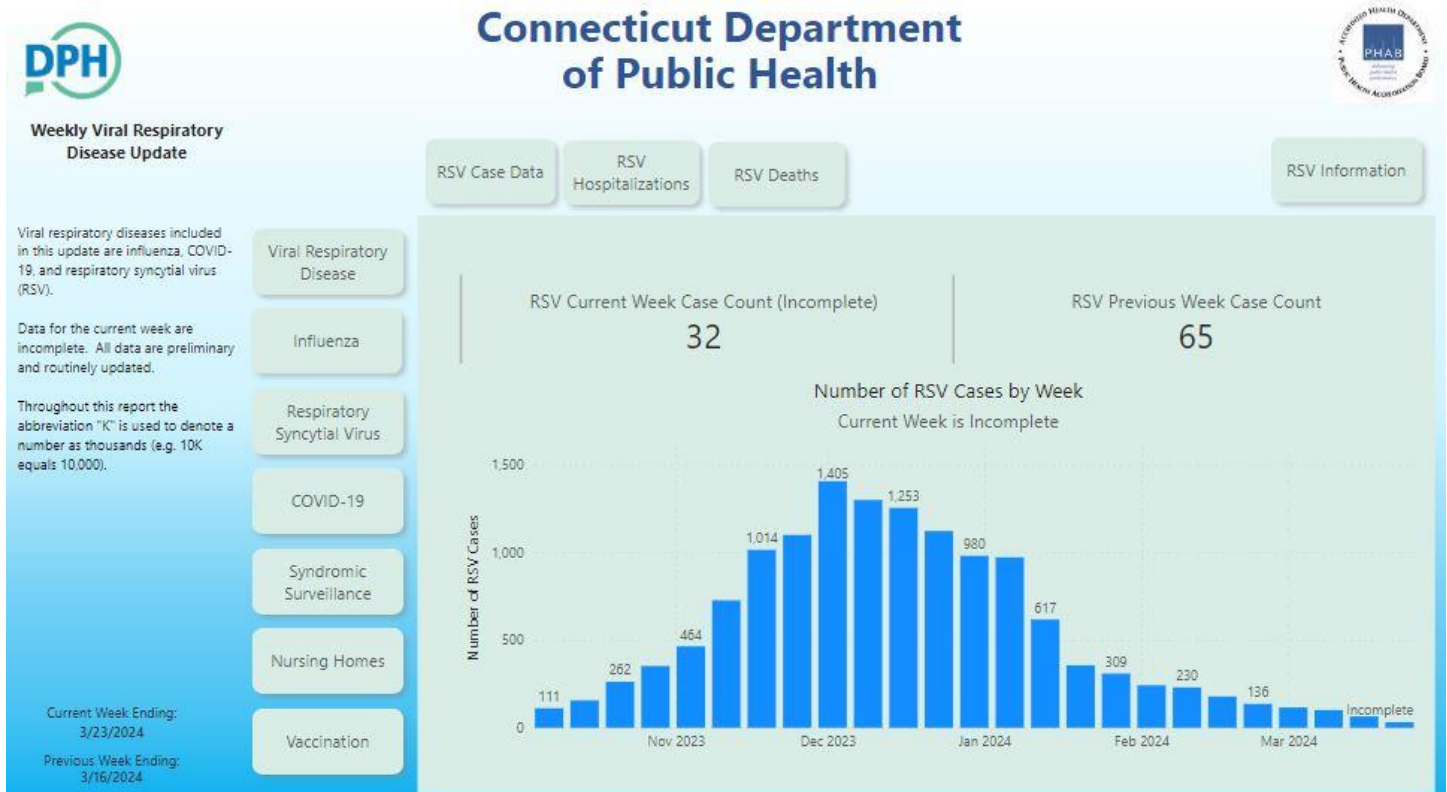
*The above data reflects a slight decline in the total number of both COVID-19 and RSV cases reported for the current month for Wallingford residents.

Respiratory Syndrome Virus (RSV)

RSV continues to be a respiratory virus of concern. Infants up to 12 months of age (especially those 6 months and younger) and children who were born prematurely, or who have chronic lung or heart disease or a weakened immune system, are at increased risk of severe RSV disease.

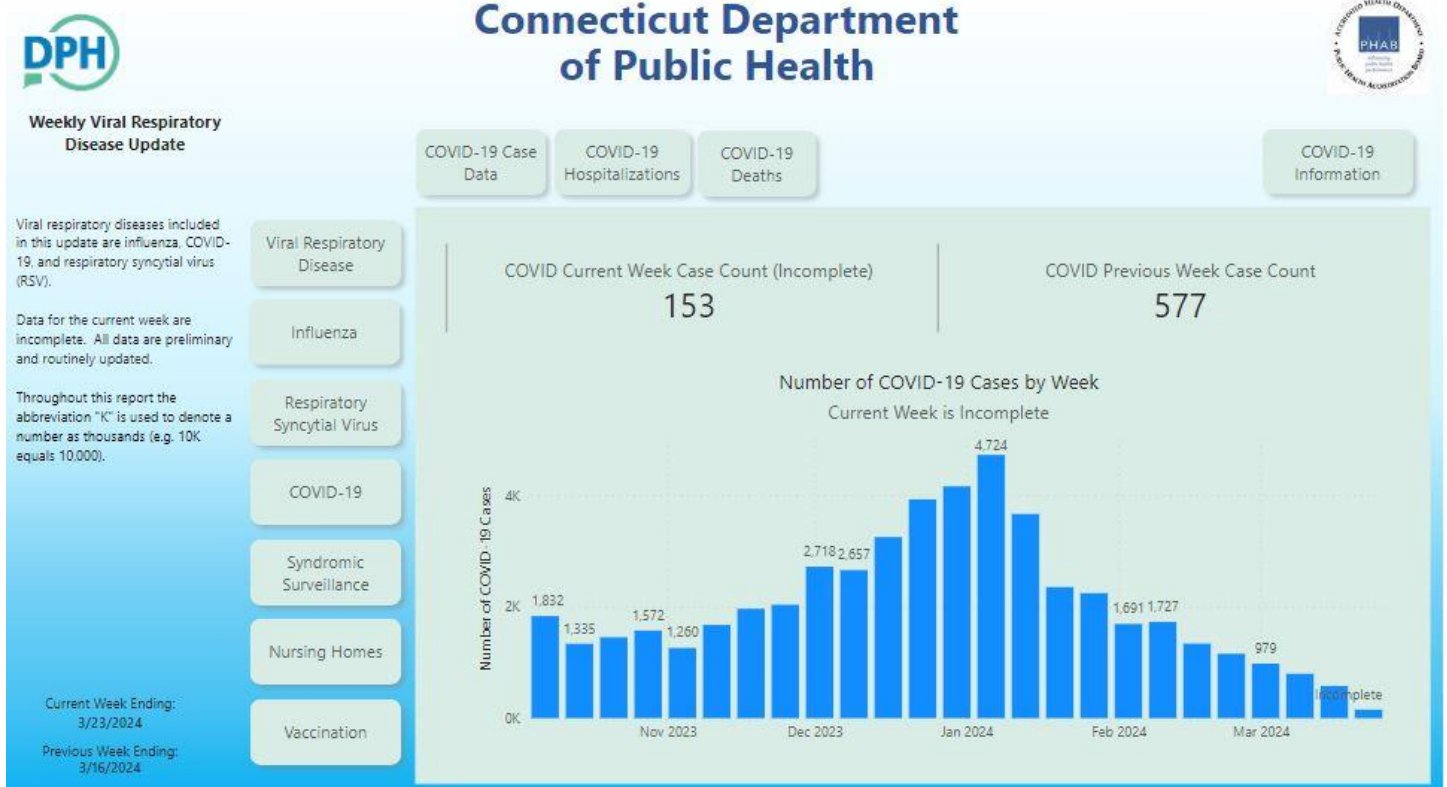
Adults at highest risk for severe RSV disease include older adults, adults with chronic medical conditions such as heart or lung disease, weakened immune systems, or certain other underlying medical conditions, or who live in nursing homes or long-term care facilities.

CT Statewide RSV Cases week ending 3/23/24



<https://data.ct.gov/Health-and-Human-Services/Connecticut-Reportable-Disease-Case-List/qhtt-czu2>

CT Statewide COVID-19 Cases week ending 3/23/24



<https://data.ct.gov/Health-and-Human-Services/Connecticut-Reportable-Disease-Case-List/qhtt-czu2>

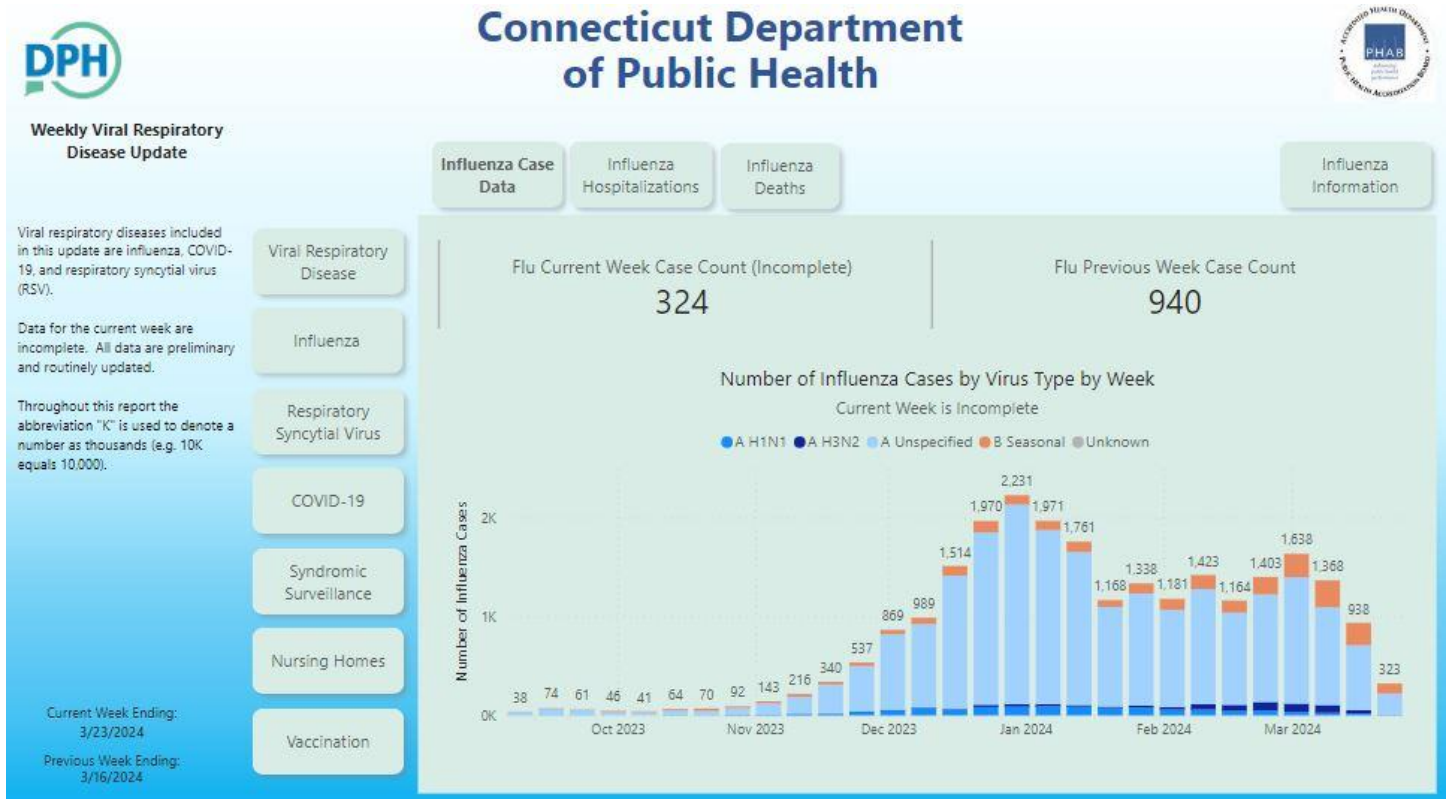
Influenza

While seasonal influenza (flu) viruses are detected year-round in the United States, flu viruses typically circulate during the fall and winter during what's known as the flu season. Most of the time flu activity peaks between December and February, although significant activity can last as late as May.

The "peak month of flu activity" is the month with the highest percentage of [respiratory specimens](#) testing positive for influenza virus infection during that flu season. Flu activity most often peaked in February, followed by December, then January and March.

<https://www.cdc.gov/flu/about/season>

CT Influenza Disease Summary week ending 3/23/24



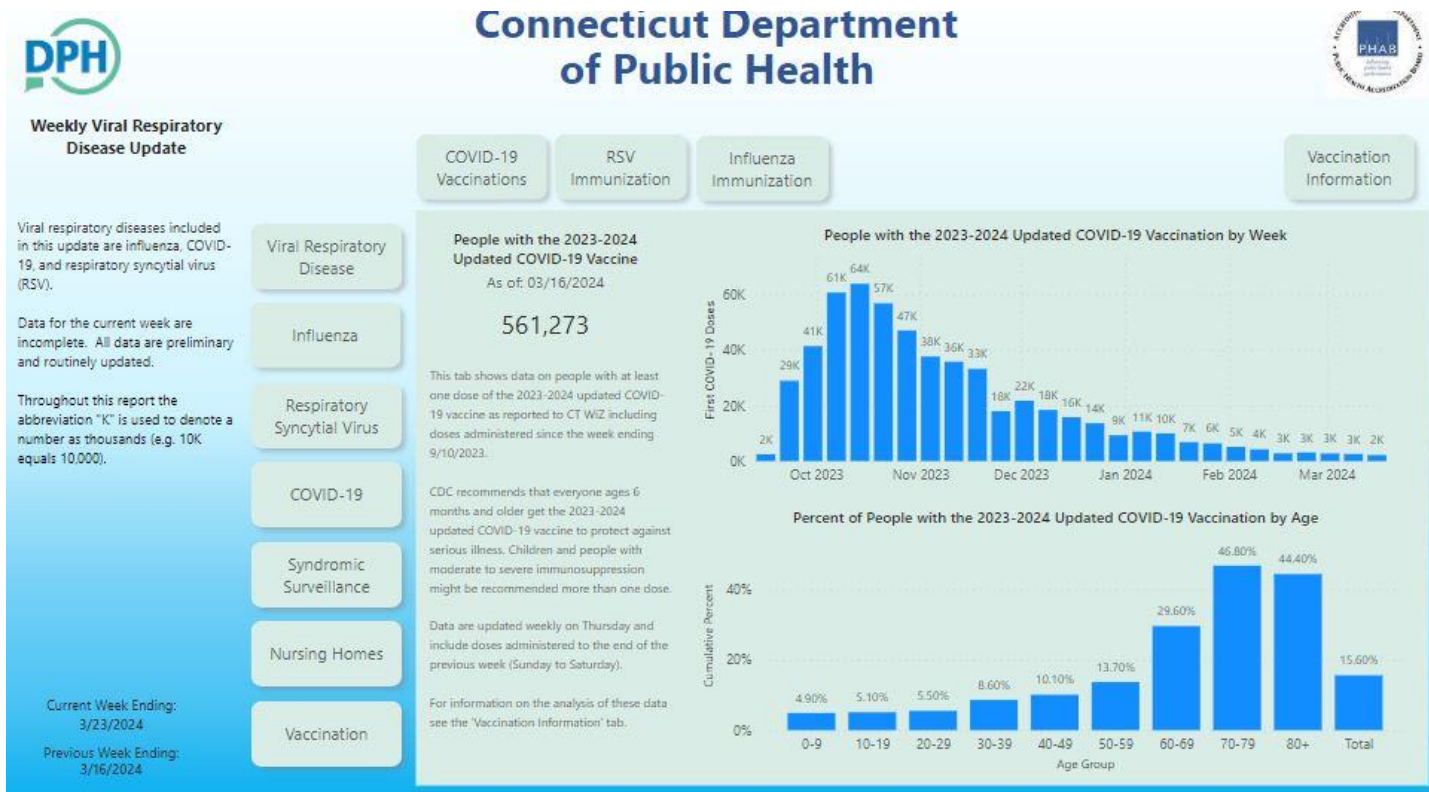
<https://data.ct.gov/Health-and-Human-Services/Connecticut-Reportable-Disease-Case-List/qhtt-czu2>

Vaccination

Residents are encouraged to receive vaccination for preventable diseases, including COVID-19, RSV and Influenza. Vaccination will reduce the severity of illness and reduce your chances of becoming infected. Current vaccination data for both COVID-19 and RSV are provided by the CT DPH, statewide data:

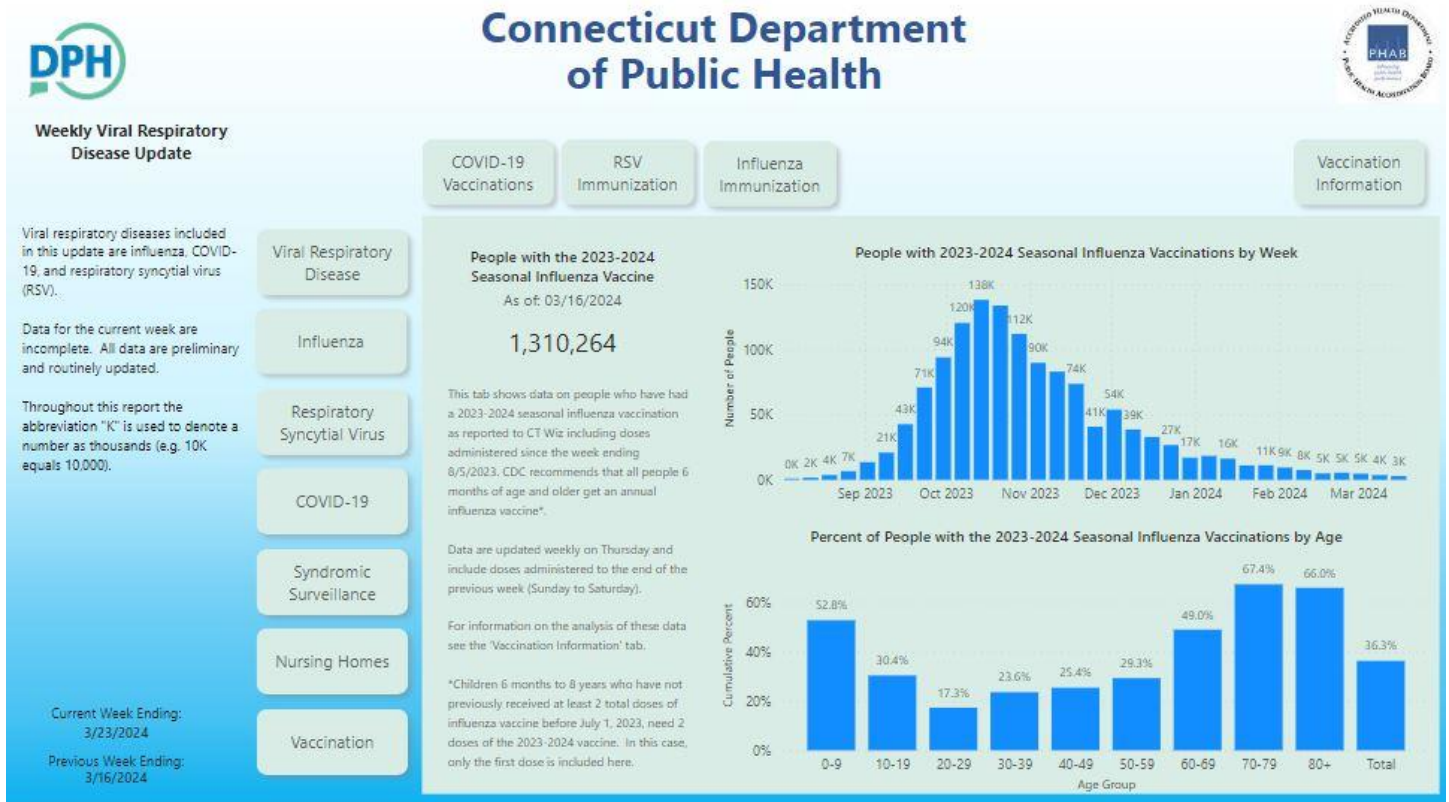
CT DPH Immunization program recently distributed Vaccination Coverage Estimates by Town. Wallingford data is shown directly after state-wide summary data.

Summary week ending 3/23/24 COVID-19 Vaccinations



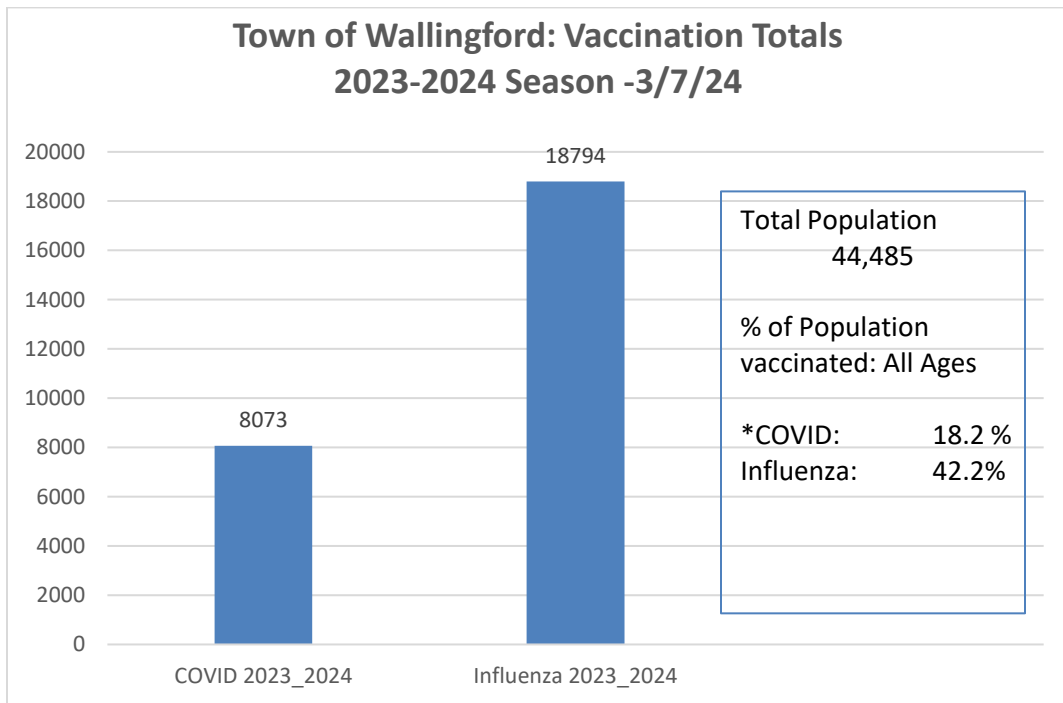
<https://data.ct.gov/Health-and-Human-Services/Connecticut-Reportable-Disease-Case-List/qhtt-czu2>

Summary week ending 3/23/24 Influenza Vaccinations



<https://data.ct.gov/Health-and-Human-Services/Connecticut-Reportable-Disease-Case-List/qhht-czu2>

Town of Wallingford, Summary of Vaccination data: July 2023- March 9, 2024



(CT DPH, Immunization Program, Memo dated 3/14/24: RVD Vaccination Coverage Estimates by town)
*COVID- at least 1 dose received

Submitted by E. Hazelwood, MPH
March 22, 2024

Additional Information

To find vaccine near you: <https://www.211ct.org/>

In the “search box” type “Flu Vaccine” and your zip code

Additional Vaccines: <https://www.vaccines.gov/find-vaccines/>

COVID-19: To find vaccine near you: <https://www.vaccines.gov/search/>

Or Call 1-800-232-0233

Free COVID-19 Home Tests: <https://www.covid.gov/tests>

For RSV vaccines: talk to your healthcare provider

The staff of the Wallingford Health Department is always available for additional questions or concerns: at 203-294- 2065

General information: Healthclerk@wallingfordct.gov

Public Health Nurse: anne.bernick@wallingfordct.gov